

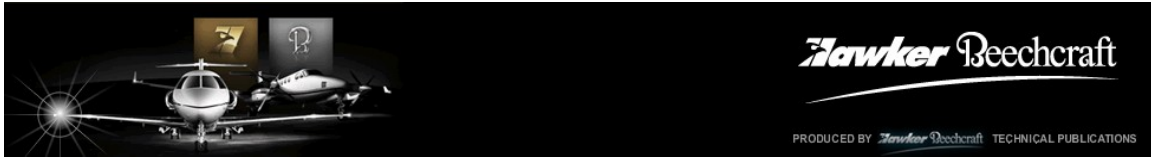
## **Viewer 5.11 – IML Viewer Software**

### **Quick Installation Guide**

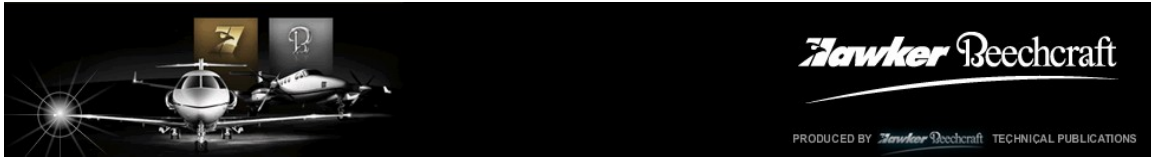
**Released: August 2010**

Interactive Maintenance Libraries (IML) allows aircraft operators to view electronic versions of aircraft maintenance manuals. Interactive hyperlinks give easy access to parts catalogs and other maintenance information. All current in-production aircraft models are available on IML, as well as many out-of-production models.

This document may contain unclassified technical data whose export, transfer and/or disclosure is restricted by United States law. Dissemination to non-US persons, whether in the United States or abroad may require an export license or other authorization. If this document constitutes an export then ECCN – 9E991, NLR applies. These commodities, technology or software were exported from the United States in accordance with the Export Administration Regulations. Diversion contrary to US law is prohibited. The information contained herein, including any attached documents or files, is confidential, may be legally privileged and is solely for the intended recipient(s). If you received this information in error, please destroy it and notify us immediately by reply e-mail, letter, fax or phone. Any unauthorized use, dissemination, disclosure, copying or printing is strictly prohibited.



<i>System Requirements</i> .....	3
<i>Preferred System Requirements</i> .....	3
<i>Changes/Enhancements</i> .....	3
<b>INSTALLATION</b> .....	4
Preparation for Installing IML Viewer.....	4
Installation Procedure.....	4
<i>Getting Started with IML Viewer</i> .....	6
Accessing Your Data CD.....	6
<i>Appendix 1 – Contacts and Support Details</i> .....	7
Publishing and IML Support.....	7
The IML software website provides the following:.....	7
Subscription Information.....	7
<i>Appendix 2 – Installation Location Details</i> .....	8
IML Viewer Program Files Location.....	8
User Files Location .....	8
<i>Legal Statement</i> .....	9
<i>Disclaimer and Limitation of Liability</i> .....	9



Hawker Beechcraft Corporation is pleased to announce the release of the Interactive Maintenance Library (IML) Viewer 5.11 Software. The IML Software Viewer has been specifically customized for Hawker Beechcraft customers.

The downloads area of the IML Support site contains the latest Viewer Software. Please read and understand the description containing specific instructions for downloading to your computer. To download an item, determine your operating system and click the appropriate Installation Package for the IML 5.11 Viewer Software (blue text). Follow any onscreen instructions.

## System Requirements

The minimum system requirements to run Interactive Maintenance Library (IML) viewer software:

- Windows 7 (All editions)
- Windows Vista (All editions),
- Windows XP with Service Pack 2,
- Windows 2003 Server with Service Pack 1,
- Windows 2000 with Service Pack 4,
- Windows 2000 Server with Service Pack 4.
- ♦ Microsoft .Net Framework v2.0 or higher. (If you do not have this installed, then please download and install it from the **Microsoft website**

<http://www.microsoft.com/downloads/details.aspx?FamilyID=0856eacb-4362-4b0d-8edd-aab15c5e04f5>

- 80 Megabytes (MB) of available hard disk space.
- Microsoft® Internet Explorer v6.0 with Service Pack 1 or higher.

## Preferred System Requirements

To enhance performance, the following preferred system requirements have been tested with the 5.11 viewer software:

- Windows XP with Service Pack 3
- 1 GB of RAM
- Microsoft .Net Framework v3.5 Service Pack 1

## Changes/Enhancements

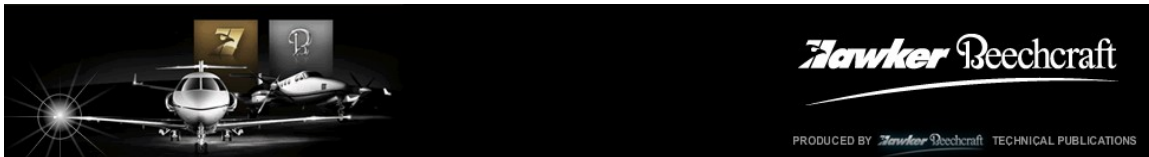
Fully compatible for Windows 7 and 64-bit Windows (Installation recognizes OS automatically and adjusts installation accordingly)

### New IML Menu

- ♦ Combines the Hawker 800XP and Hawker 850XP Model Link as one and opens a shared Model Menu.
- ♦ Combines the Beechjet 400/400A and Hawker 400XP Model Link as one and opens a shared Model Menu.

### New Model Menus

You may have noticed your model menu's have been redesigned to give you more information about each book. Book Effectivities have been added and/or if extensive you're referenced to the Book Title Page.



When a CD is issued because of a programming correction or for a Temporary Revision the Menu now states the purpose of the CD release in the header.

Temporary Revisions are listed in the Model Menu but not linked. The book table of contents menu contains hyperlinks directly to the books current Temporary Revisions. A Log of Temporary Revisions has been added to the book menu when applicable.

Book Links from the Model Menu are now blue to immediately identify the links.

### Fixes

- ♦ IML Scheme is locked so users do not lose settings or graphics/text display windows.
- ♦ End of page printing breaks fixed to not break in the middle of text.
- ♦ IML Maintenance CD swapping doesn't require a restart of IML.

### NOTE:

In order to provide essential customer requested features, it has been necessary to produce CDs that will only be compatible with Viewer 5.4 or later. Previous IML (REPS 4.3.X or earlier) viewer software is not supported.

## INSTALLATION

### *Preparation for Installing IML Viewer*

The following is essential prior to installation because the Viewer actively reads/writes to the All User Folder during normal Viewer operations.

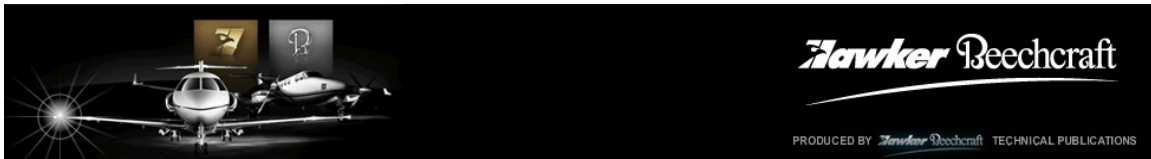
- ♦ Ensure Microsoft.Net Framework Version 2 or greater is installed on your computer before attempting to install IML Version 5 software. It will be listed in Add/Remove Programs if installed.
- ♦ Determine your computer Operating System
- ♦ Read/Write permissions granted to C:\Documents and Settings\All Users\Application Data\HawkerBeechcraft\IML for all users of the IML Viewer (*Windows Vista and Windows 7 systems require Read/Write permissions to the C:\ProgramData and C:\Users\Public folders*).
- ♦ **IMPORTANT!** Do not install the software while signed on as an I.T. Administrator. Installation of the Viewer at the Administrator2 level will result in the user.config files being installed in the Administrator's Folder instead of the All Users Folder. Other users will not be able to use the program.
- ♦ If you have a previous IML 4.3 and/or REPS viewer installed do not remove it before you install the new IML Viewer 5 software. The new IML Viewer 5 imports notes from the old Viewer.


### *Installation Procedure*

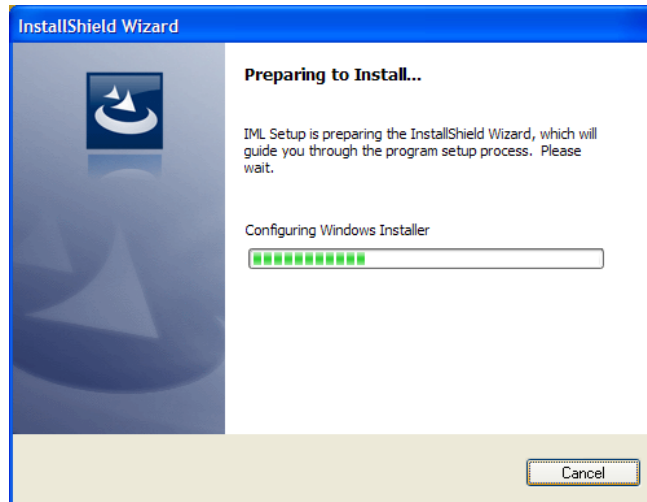
Run the appropriate Viewer installation directly from the website to your computer or save the executable file from the IML support website (we suggest saving to your desktop). The installation will begin configuring itself, and analyzing your system for details required to install the Viewer.

**NOTE:** If you have multiple computers it may be more efficient to save the executable to a portable storage device and run the install for each computer that needs the Viewer installed.

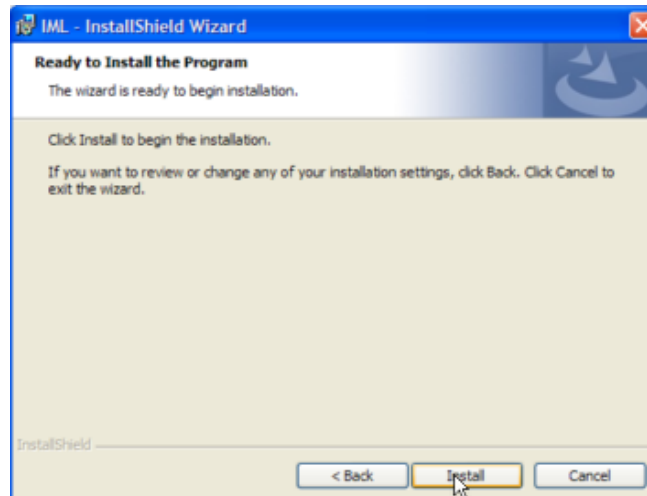
A software CD is available for a nominal shipping/handling fee from Hawker Beechcraft Technical Manual Distribution Center (TMDC). All updates/patches to the software will be available online and it may be necessary for you to run a patch after a CD Installation to get the latest viewer software changes.

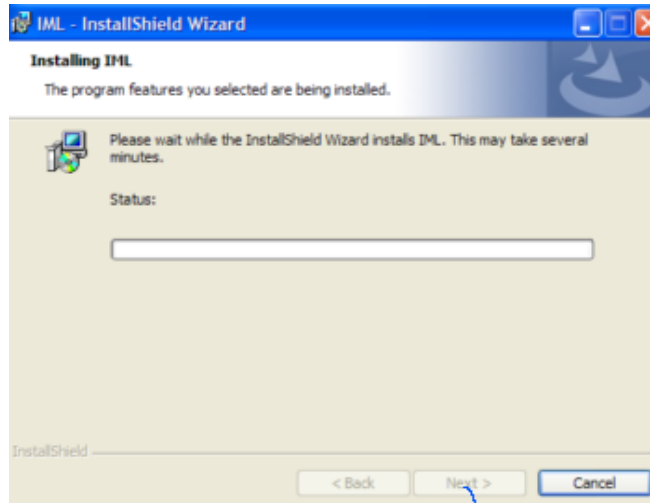
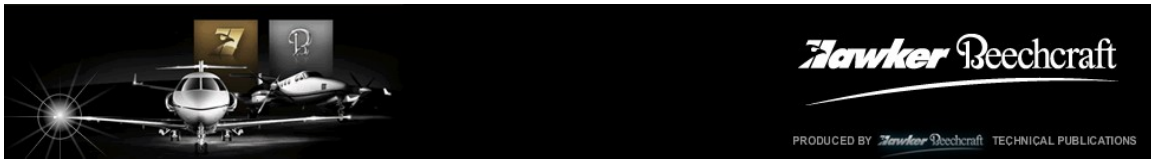


1. Double-Click the Setup.exe icon  located where you downloaded the installation file.
2. Wait while the InstallShield Wizard prepares to install the IML Viewer 5.x Software.



3. Click Install to begin the installation process.
4. After all installation tasks have completed successfully, you will see the final installation screen.





5. Click **Finish** to complete the installation process.



6. Complete the '**Accessing Your Data CD**' procedure in the next section.

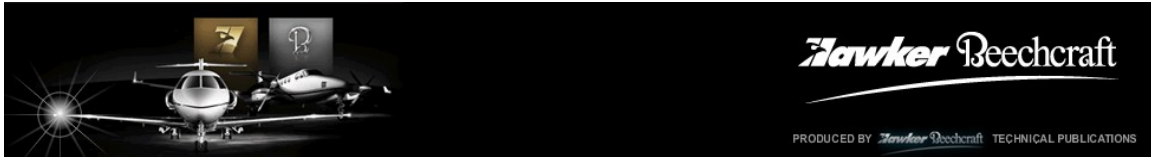
### **Getting Started with IML Viewer**

Open or download the User Guide in the How-to Section of the IML Support website. Contact information is in Appendix I of this document. The User Guide provides details about the IML Viewer functionality and how to start using it quickly and easily. For additional information on IML Viewer functionality users are encouraged to make use of the integrated help inside IML Viewer by pressing **F1** while the program is running.

**NOTE:** The integrated help covers some features that may not be activated in your HBC customized Viewer.

### **Accessing Your Data CD**

1. Insert the Data CD into the CD-ROM drive of your computer and allow the system time to recognize the CD.
2. Close the Auto-play dialog box if it opens.
3. Double Click the IML Viewer Shortcut placed on your desktop during installation. The Viewer opens the Hawker Beechcraft Interactive Maintenance Library Main Menu.



## Appendix 1 – Contacts and Support Details

### ***Publishing and IML Support***

IML is easy to use. Help is readily available via a helpline (8:00 AM to 4:30 PM Central time). During off-hours, leave a voice mail message and your call will be returned within one business day.

### ***The IML software website provides the following:***

Website: <http://pubs.hawkerbeechcraft.com> (Click IML Software Support)

- ◆ What's New
- ◆ Current CD Status: Displays Rev Dates and Distribution Dates of CDs.
- ◆ Downloads: Latest Software, Updates with detailed instructions.
- ◆ Topic Specific information.
- ◆ Submit a Question: Launches an email to IML Software Support.
- ◆ About IML – General Description Information about the libraries.

To provide efficient responses, as a minimum, please include the following in your email:

- ◆ Name and phone number
- ◆ Company
- ◆ Contact Preference (email or call back from the helpline support agent)
- ◆ Airplane Model
- ◆ Manual affected
- ◆ Description of the problem
- ◆ Screen prints can be very helpful

Software Operation or Installation Questions: IML Software Support:

- ◆ Phone: 800.240.2959 or +1-316.676.3053
- ◆ Email: [IML@hawkerbeechcraft.com](mailto:IML@hawkerbeechcraft.com)

### ***Subscription Information***

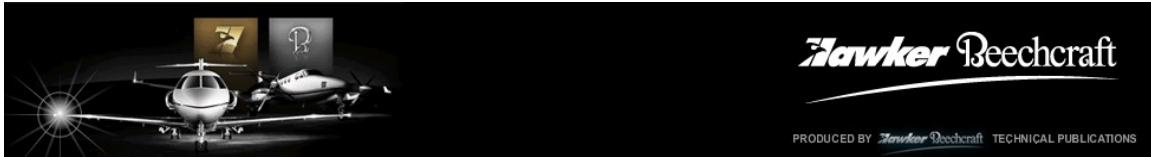
Technical Manual Distribution Center (TMDC):

- Phone: 800.796.2665 or +1.316.676.8238
- Email: [TMDC@hawkerbeechcraft.com](mailto:TMDC@hawkerbeechcraft.com)
- Website: [http://hawkerbeechcraft.com/service\\_support/pubs/default.aspx](http://hawkerbeechcraft.com/service_support/pubs/default.aspx)

**Note:** IML uses the World Wide Web (Internet) for distribution of software revisions and patches. IML software is also available on CD for a nominal charge of \$10 plus shipping and handling. To order a CD online:

1. Open the Publication website at <http://pubs.hawkerbeechcraft.com>
2. Enter **IML-Viewer** in the *Part Number* box
3. Click **Search**
4. Click the **Add to Cart** button, then follow normal checkout procedures

If you do not have access to the Web, contact the Technical Manual Distribution Center.



## Appendix 2 – Installation Location Details

The following information is provided for I.T. Administrators. The HawkerBeechcraft\IML path and contents should not be moved or renamed.

### ***IML Viewer Program Files Location***

- ♦ **Bin Folder** contains the .NET plug-ins for the Viewer. None of these plug-ins should be manipulated in anyway at the folder level or within the Viewer configuration program by users.
- ♦ **Defaults Folder** contains the default settings and layouts for the customized IML Hawker Beechcraft Installation Schemes and Parts Catalog Shopping Cart.
- ♦ **Documentation Folder** contains the built-in Mincom (software developer) User guide that can be accessed within the Viewer via the Menu Bar > Help > IML Viewer Help. Keep in mind this is the developers Help version and can be of some benefit, it does not cover the customization for our customers done by Hawker Beechcraft.
- ♦ **Menu Folder** contains the customized IML Main Menu. When the Menu has an update the update will be placed on the IML Software Support Downloads page on the web.
- ♦ **Private Notes Folder** contains all of the private notes made by individual users and is available only to users of the computer where the Viewer is installed.

**NOTE:** Public Notes are generally used for Network users and need to be set up with a network location, then mapped using the Viewer Configuration Tool.

Both Private and Public Notes, and how to create them, is found in the user guide documentation.

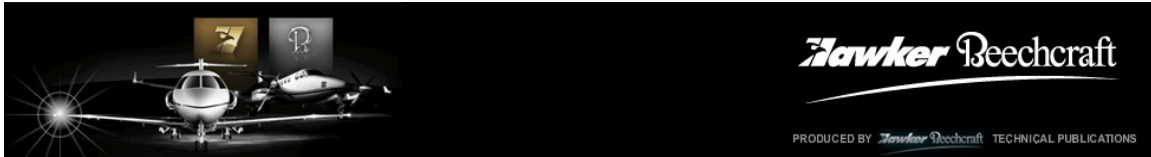
### ***User Files Location***

#### **All Users**

The user.config file in the All Users folder contains the configuration preferences as set by the Hawker Beechcraft customized installation.

#### **Individual User Profile**

This user.config file contains the configuration preferences as set by each individual user.



## **Legal Statement**

Copyright ©2010 Hawker Beechcraft Corporation. All rights reserved. Hawker and Beechcraft are trademarks of Hawker Beechcraft Corporation. No part of this document may be reproduced, transferred, sold or otherwise disposed of without the written permission of Hawker Beechcraft Corporation.

All trademarks are the copyright of their respective owners.

WinView, WebView and LinkOne are registered trademarks of Mincom Limited.

Microsoft, Windows and the .NET Framework are registered trademarks of Microsoft Corporation.

## **Disclaimer and Limitation of Liability**

Every effort has been made to ensure the accuracy of this IML Viewer reference documentation. Hawker Beechcraft makes no warranties of any kind (whether express, implied or statutory) with respect to the information contained herein. Hawker Beechcraft assumes no liability to any party for any loss or damage (whether direct or indirect) caused by any errors, omissions or statements of any kind contained in this software documentation.

Further, Hawker Beechcraft assumes no liability arising from the application or use of the product or service described herein and specifically disclaims any representation that the products or services described herein do not infringe upon any existing or future intellectual property rights. All rights and privileges related to any intellectual property right described herein are vested in the patent, trademark, or service mark owner and no other person may exercise such rights without express permission, authority or license secured from the patent, trademark, or service mark owner. Hawker Beechcraft reserves the right to make changes to any information herein without further notice.

Technical Publications  
Hawker Beechcraft Corporation  
9709 E Central Plant B6  
Wichita, Kansas 67201-0085 USA