

**Hawker Beechcraft Corporation**



**Interactive Maintenance Library  
Viewer 5 – IML Viewer Software**

# **Comprehensive User Guide**

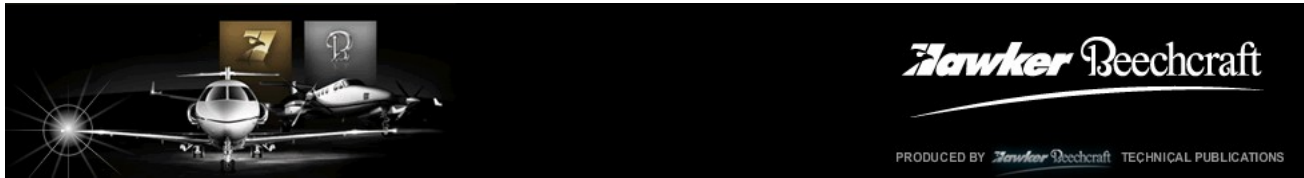
**Revision 2: September 2010**

Interactive Maintenance Library (IML) allows aircraft operators to view electronic versions of aircraft maintenance manuals. Interactive hyperlinks give easy access to parts catalogs and other maintenance information. All current in-production aircraft models are available on IML, as well as many out-of-production models.

## Table of Contents

Legal Statement .....	2
Disclaimer and Limitation of Liability.....	2
Information.....	2
Installation – System Requirements - Configuration.....	2
Getting Started with IML Viewer .....	2
Accessing Your Data CD .....	1
Main Menu Tour .....	1
Customizing the IML Viewer .....	1
How to Access the Configuration Menu.....	2
Using the Configuration dialog .....	2
Licensing.....	2
Security Keys .....	2
Adding Security Keys .....	2
Copying Books onto a Hard Drive or Network Server .....	3
General.....	3
Mapping the Viewer (Adding Local Libraries).....	5
How to Add, Remove or Disable a Library .....	5
Restoring IML Viewer Configuration Default Settings.....	5
The IML Viewer User Scheme .....	5
Toolbars and Command buttons .....	6
Version 5 Viewer Controls compared to Version 4 Windows.....	7
Pictures Control .....	8
List Notes Control .....	10
Text Window .....	10
Navigating an IML Book using the Built-in Table of Contents Control (TOC) .....	11
Table of Contents Control.....	11
Parts and Wiring Diagram Manual Text Window and Table of Contents .....	13
Built-in Portable Document Reader (PDF).....	14
PDF Toolbar Features from Left to Right .....	15
Printing the PDF document .....	15
PDF Hyperlinks .....	15
Shopping Cart (Selection List) Control .....	15
Notes.....	16
Setup Location for Public Notes and Public Bookmarks.....	17
Editing / Deleting Notes .....	18
Creating Notes .....	18
Parts List Item Notes .....	18

The Notes Explorer .....	19
Bookmarks .....	20
Creating Bookmarks .....	20
Access: .....	21
Location:.....	21
Managing Bookmarks .....	22
Editing Bookmarks .....	22
Using a Bookmark.....	23
Searching.....	23
Windows Search .....	26
Filtering .....	26
Filter by Serial Number (EFFECT=) Dialog.....	26
Printing.....	27
Appendix 1 – Contacts and Support Details .....	I
Contact Information .....	I
Publishing and IML Support .....	I
IML Software Support: .....	I
Subscription Information .....	II
Technical Manual Distribution Center (TMDC): .....	II
Technical and Field Support.....	II
Ordering Spare/Replacement Parts.....	II
Appendix 2 – Installation Location Details .....	III
IML Viewer Program Files Location .....	III
User Files Location.....	IV
All Users .....	IV
Individual User Profile .....	IV



## Interactive Maintenance Library User Guide

### Legal Statement

Copyright © 2010 Hawker Beechcraft Corporation. All rights reserved. Hawker and Beechcraft are trademarks of Hawker Beechcraft Corporation.

All trademarks are the copyright of their respective owners.

WinView, WebView and LinkOne are registered trademarks of Mincom Limited.

Microsoft, Windows and the .NET Framework are registered trademarks of Microsoft Corporation.

### Disclaimer and Limitation of Liability

Every effort has been made to ensure the accuracy of this IML Viewer reference documentation. Hawker Beechcraft makes no warranties of any kind (whether express, implied or statutory) with respect to the information contained herein. Hawker Beechcraft assumes no liability to any party for any loss or damage (whether direct or indirect) caused by any errors, omissions or statements of any kind contained in this software documentation. Further, Hawker Beechcraft assumes no liability arising from the application or use of the product or service described herein and specifically disclaims any representation that the products or services described herein do not infringe upon any existing or future intellectual property rights. All rights and privileges related to any intellectual property right described herein are vested in the patent, trademark, or service mark owner and no other person may exercise such rights without express permission, authority or license secured from the patent, trademark, or service mark owner. Hawker Beechcraft reserves the right to make changes to any information herein without further notice.

Technical Publications

#### **Hawker Beechcraft Corporation**

10511 E. Central  
Wichita, Kansas  
67201-0085 USA

### Information

For the latest Interactive Maintenance Library Viewer Software information, upgrades, documentation and tips, please visit the IML Support Website

[http://www.hawkerbeechcraft.com/customer\\_support/technical\\_publications/iml\\_support/](http://www.hawkerbeechcraft.com/customer_support/technical_publications/iml_support/)

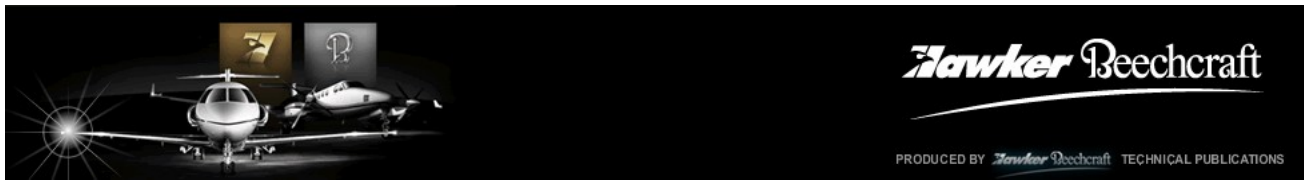
### Installation – System Requirements - Configuration

Installation and System Requirement Configuration details are available as a separate Installation Guide on the IML Support website in the Downloads section.

### Getting Started with IML Viewer

The following is an overview of IML Viewer functionality and how to start using it quickly and easily. We encourage all users to make use of the integrated help to access detailed information inside IML Viewer. Press **F1** when running the program to access this feature.

**NOTE:** The integrated help covers some features that may not be activated in your HBC customized Viewer.



## Interactive Maintenance Library User Guide

### Accessing Your Data CD

1. Insert the Data CD into the CD-ROM drive of your computer, and allow the computer enough time to recognize the CD.
2. Close the Auto-play dialog box that generally opens when your system recognizes the presence of a CD.



3. Double Click the IML Viewer Shortcut placed on your desktop during installation. The Viewer opens the Hawker Beechcraft Interactive Maintenance Library Main Menu.

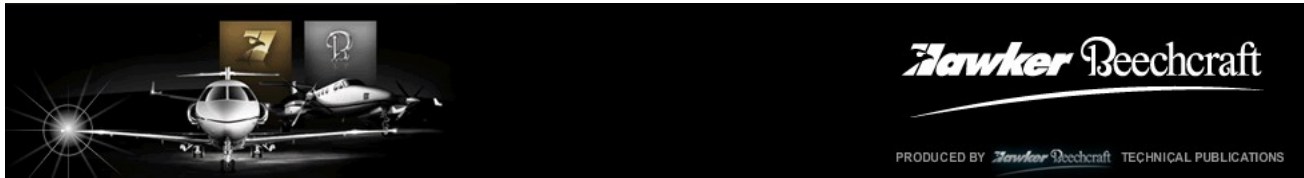
### Main Menu Tour

<i>Interactive Maintenance Library</i>	
<i>Jets</i>	<i>Pistons</i>
Diamond 1/1A Beechjet 400/400A and Hawker 400XP	Bonanza A36/B36TC/G36 Baron 55/58/G58
Premier I/IA	<b><i>Turboprops</i></b>
125-1A/B 125-3A/B 125-400 125-600 125-700 Hawker 750 Hawker 800 Hawker 800XP & 850XP Hawker 900XP Hawker 1000 Hawker 4000	King Air 90 Series King Air 100 Series King Air 200 Series King Air 300 Series
	<b><i>Airliners</i></b>
	Model 99/C99 Model 1900/1900C Model 1900D

Raytheon Aircraft Company, which has been renamed Hawker Beechcraft Corporation, is now owned by Hawker Beechcraft, Inc. Neither Hawker Beechcraft, Inc. nor Hawker Beechcraft Corporation are affiliated any longer with Raytheon Company. Any Raytheon marks contained in this document are owned by Raytheon Company and are employed pursuant to a limited license granted by Raytheon Company.


Figure 1 - IML Main Menu

4. Click desired Model. The Model Menu opens to display a list of the Manuals (Books) available.
5. Click the Manual desired.
6. Click the Chapter.
7. Click the desired Topic listed in the Linked Table of Contents for that Chapter.



## Interactive Maintenance Library User Guide

Table 1 – IML Main Menu Left Window Map

 <p><b><u>Software Support</u></b></p> <p>1.800.240.2959 toll-free 316.676.3053 Email IML Software Support</p> <p>CD Status</p> <p><b><u>Websites</u></b></p> <p>Hawker Beechcraft Corporation Online Service Information Online Kit Catalog Technical Publications Buy Parts</p>	<p><b>Software Support</b></p>
	<p><b>Helpline Support</b> Call the toll-free number anywhere in the Continental United States or dial the direct number. The Help-Line is open 8:00 AM to 4:30 PM <b>Central Time Zone</b>. Leave a voicemail if calling outside of the stated hours.</p>
	<p><b>Email Support</b> Click the Email Link to send an email direct to the Help Line Technicians. See the Contact Us Section in Appendix 1 for instructions on what to include in an email or voicemail contact.</p>
	<p><b>IML Software Support</b> Direct Link to the IML Software support website.</p>
	<p><b>CD Status</b> Check this link when you need to know if the data CD you have is current. The report details the release date and revision of the current CD. It also lists individual manual titles, part numbers, revised/reissued numbers and dates; software corrections.</p>
	<p><b>Web Sites Links</b></p>
	<p><b>Hawker Beechcraft Corporation:</b> Main Corporate Page</p>
	<p><b>Online Service Information:</b> Communiqués, Service Bulletins</p>
	<p><b>Online Kit Catalog:</b> Searchable Database</p>
	<p><b>Technical Publications:</b> Order Publications Online</p>
<p><b>Buy Parts:</b> Hawker Beechcraft Parts and Distribution</p>	

### Customizing the IML Viewer

Testing and customer consultation has resulted in an IML Viewer 5.x that is designed specifically to meet the needs of our Hawker Beechcraft Customers.

Although there is customer leeway in changing some settings, we recommend you leave the scheme as it has been set for you. In some cases, changing the settings may result in unfavorable Viewer behavior.

Features that you can safely customize include:

- ◆ Where to look for books if you have chosen to image your CDs to the computer hard drive or a network drive. The Book Mapping Procedure is included in the Libraries section of the Configuration Menu.
- ◆ Parts List Items that have notes against them can be indicated by an icon or Highlighted. The default setting is the Icon.

## Interactive Maintenance Library User Guide

### How to Access the Configuration Menu

1. Click Tools from the main menu bar
2. **Left-click** on the **Configuration...** pull down menu option. The Configuration dialog opens.

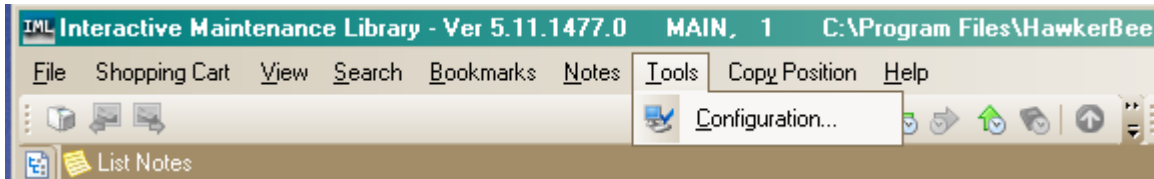


Figure 2 - Accessing Configuration Screen from Tools menu

### Using the Configuration dialog

The configuration manager window is split into two separate areas. The left side lists Viewer functions that can be configured. for each area. The right side displays the configuration options for the currently selected item in the list.

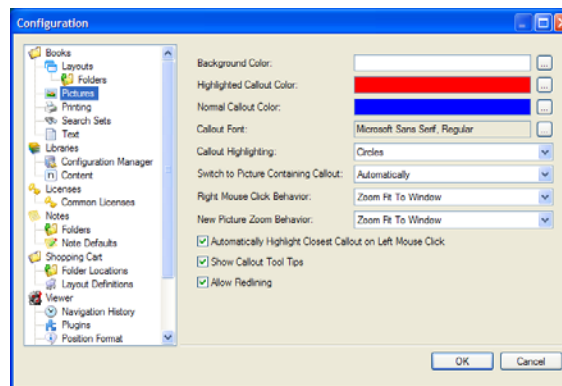


Figure 3 - Picture Configuration Window

After you have finished configuring the IML Viewer, click **OK** to save changes.

### Licensing

The Viewer License allows you to read books from Hawker Beechcraft Corporation's Interactive Maintenance Library. The License is automatically installed with the IML Viewer.

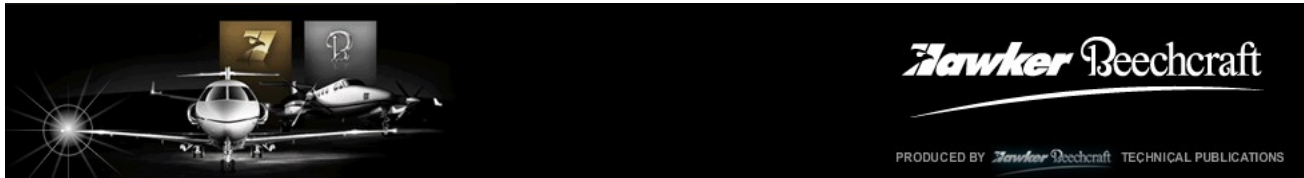
### Security Keys

Security keys for most manuals are no longer required by HBC. The installation of Viewer 5 still includes security keys. However, if you receive a "You are not authorized to read this book" message, please call the IML Help Line.


### Adding Security Keys

Some IML Manuals remain restricted until revised, and require a security key to view the content. To add a security key license to IML Viewer, open the Configuration dialog and select Licenses in the configuration list on the left side of the Configuration window.





## Interactive Maintenance Library User Guide

2. Insert the IML CD into the CD-ROM drive.
3. Using Windows Explorer, drag and drop the directory named “Books” from the CD-ROM drive to the appropriate folder created in step 1 (i.e. Beechjet, Premier, Hawker, etc.). *Most CDs contain approximately 600 MB of data and can take up to 30 minutes to copy.*
4. “Point” the IML software to the new location using the Configuration Manager within the IML Viewer:
  - a. Open IML Viewer
  - b. Click Tools and select Configuration. . .
  - c. Select Libraries in the left pane of the Configuration Window.
  - d. Click the Green Plus sign  above the Libraries pane on the right.
  - e. Browse to select the folder that the data was copied to, (above).
  - f. Click to select the “**Books**” folder, and then click **OK**.
  - g. Click **OK**. The new library will be added to the bottom of the Libraries list.

### Update existing data files when a CD gets revised

Use this procedure to update files when a revised CD arrives and the Maintenance Manuals have been copied to a local hard drive, or to a Network drive.

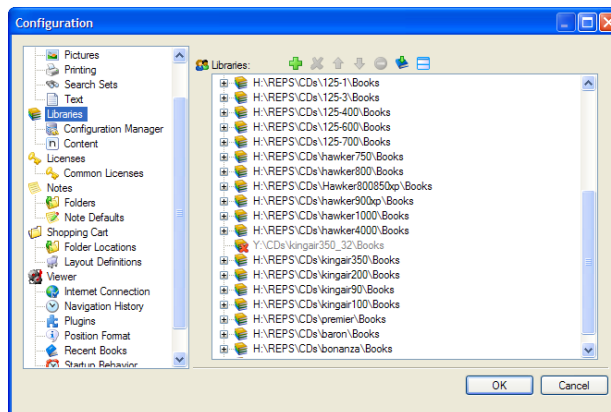
1. On the destination drive, locate the directory that contains the older data. For example: KingAir200.
2. Rename the directory so it includes the word “old” (without quotes). For example: KingAir200\_old.
3. Create a new directory with the same basic name as the original one (above). In this example, KingAir200.
4. Copy the Books folder and all of its contents from the CD into the new directory.
5. Run the IML Viewer and randomly access a few Books. This makes sure the new files can be located and accessed by the Viewer.
6. Delete the original folder (in this example, KingAir200\_old) and all its contents.

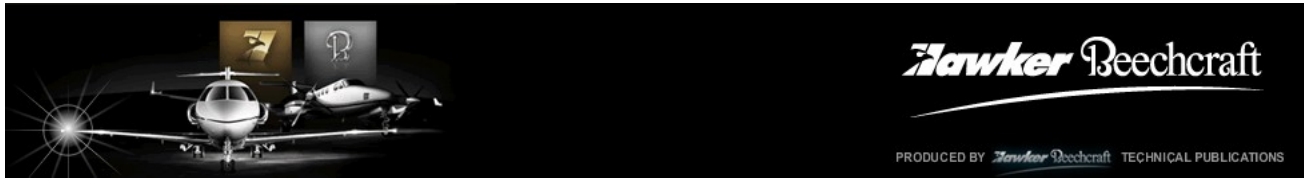
### Establishing Hierarchy via IML Administration

Leave the C:\Program Files\HawkerBeechcraft\IML\Menu, D:\books, E:\books At the top of the Library.

The IML software searches for the data in the top down order it finds the mapped books in the Active Libraries and Books window. This is only an issue when a user has more than one library that shares common manuals. This is occasionally an issue if for example, you have several Hawker data CDs imaged and a shared manual such as the Overhaul Manual is revised – If you don’t update all of the data for each Hawker Model then the viewer could access an outdated shared manual if it finds it first in the Libraries folder List.

For example: The library list in the Configuration Manager below has the earlier 125-1 Hawker ahead of the 800850xp\Books. They share a common Overhaul Manual. If the Overhaul manual was revised and you update the 800 Series CD but not the 125-1, then the IML Viewer would find the outdated 125-1 Overhaul Manual in the 125-1\Books location first and open it instead of the latest revised version located in the 850xp. It is important when having multiple model CD images to keep this in mind.





## Interactive Maintenance Library User Guide

### Mapping the Viewer (Adding Local Libraries)

The IML Viewer Software will acknowledge an IML Data CD as long as the CD is inserted and recognized by your computer before the IML Viewer is opened. If the path to your CD drive, hard drive, or network is lost by the IML Viewer, select Libraries from the configuration window to remap the drive. This will open the Libraries application in the configuration window.

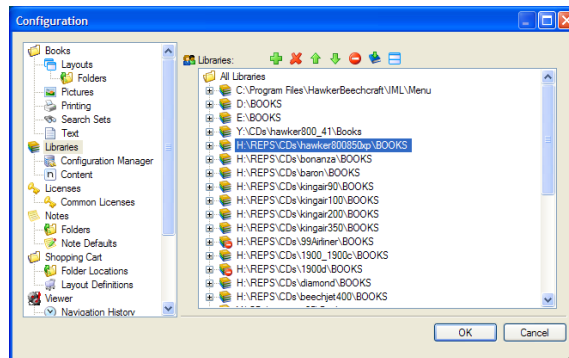





Figure 6 - Add Libraries

### How to Add, Remove or Disable a Library

1. From the libraries configuration window, click the **Add Library** button .
2. A folder browsing dialog will be shown. Select the folder where your Viewer library is located and select the Books folder. Then click **OK**.
3. You will now see your library under the All Libraries folder in the Libraries window.
  - ◆ You can expand a library to see which books are available from that library.
  - ◆ To remove a library path, select the library from the list, and click the **Remove Selected** button .
  - ◆ To disable/enable a library, select the library from the list, and click the **Disable/enable** Library button .

### Restoring IML Viewer Configuration Default Settings

If you have customized the viewer and are missing toolbars or windows you can't restore, please call the IML Helpline.

### The IML Viewer User Scheme

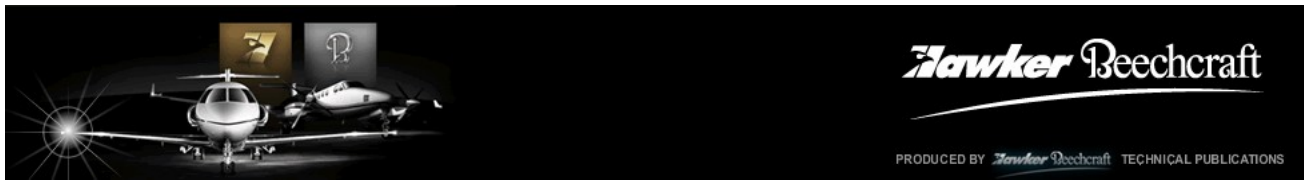
The IML Viewer window contains a number of main controls such as:

- ◆ **Table of Contents** (or TOC)
- ◆ **Text** – Where Interactive and PDF documents appear.
- ◆ **Shopping Cart** – Interactive with Parts and Wiring Catalogs (Does not interact with PDF catalogs). Sometimes referred to as Selection List.
- ◆ **List Notes** – Visible when a private or public note has been created against a page or book by the user.
- ◆ **Pictures** – Visible when there is a graphic(s) for that page.

The toolbars have tool buttons placed on them to help you access functionality quickly.

These include:

- ◆ **Navigation**



## Interactive Maintenance Library User Guide

- ◆ Pictures
- ◆ Search
- ◆ Navigation 2
- ◆ Filter

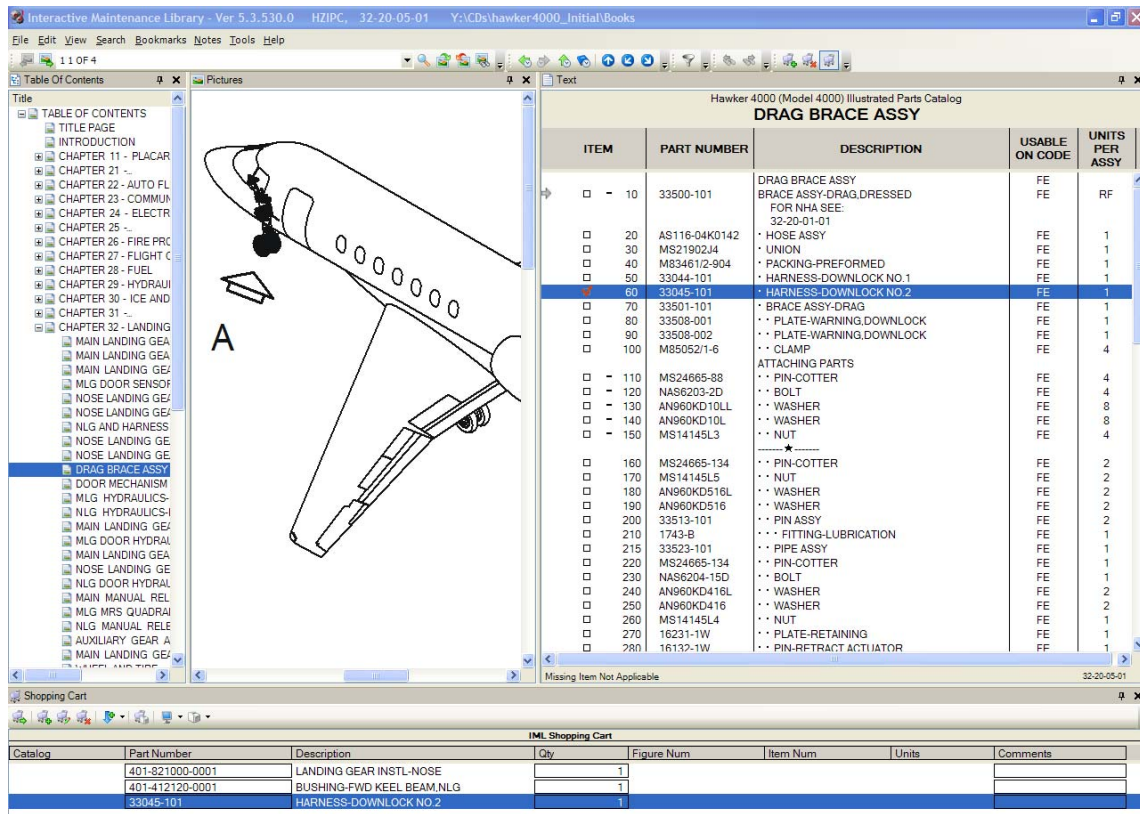


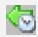
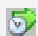
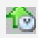
Figure 7 - Viewer User Interface

We recommend leaving the Control windows and toolbars as placed by the customized Viewer Installation. Each control can be undocked and placed anywhere within the Windows desktop. Undocked controls may be placed at the edge of the IML Viewer window or another docked control. Controls may also be hidden. Clicking or hovering the mouse on a small tab on the edge of the IML Viewer window will show docked controls.





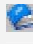
### Toolbars and Command buttons

Toolbars contain command buttons that are shortcuts to common functions provided by the IML Viewer.

Table 2 - Navigation Toolbar

Button – (Keyboard Shortcut)	Description
 (F12)	History – Back Goes back one step following the path you took to get there.
	History - Forward Goes forward one step in history.
	Main Menu Goes back to the IML Main Menu.

### Interactive Maintenance Library User Guide

Button – (Keyboard Shortcut)		Description
 (Ctrl+T)	Show/Hide TOC	Shows or hides the Viewer built-in Table of Contents control.
	Chapter TOC	Opens the Chapter page of current page.
 (Page Up)	Previous Page	Opens the previous page in the manual.
 (Page Down)	Next Page	Opens the next page in the manual.
	Go back to the Start of the Current Book	Returns you to the Manual Menu.

Toolbars and command buttons can be customized using the Toolbar Customization dialog, found by right clicking on any toolbar and selecting the Customize menu item. Command buttons can be added and removed quickly by holding down the ALT button on the keyboard and dragging the button to another toolbar or menu.

To restore any closed toolbar or control to its default condition, right click on any open toolbar and select the Customize menu item. Click on any closed toolbar from the list to open it. Dock the opened toolbar to a desired location. If you select Lock the Toolbars, there is no easy way to Unlock them.

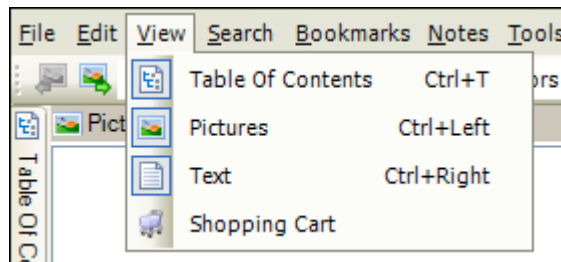


Figure 8 – Icon's in the View Shortcut Menu access windows.

### Version 5 Viewer Controls compared to Version 4 Windows


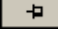
The table below compares the controls in Version 5 viewer software with the naming convention and description used in Version 4 viewer software.

Table 3 - Software Version Comparison

Version 4 Window	Version 5 Control	Function
Table of Contents Icon	Table of Contents Tab	Default is un-pinned Tab. When mouse hovers over the tab the entire Book's Table of Contents is displayed.
Text or Parts Window	Text Window	Displays Interactive Text, PDF Documents and Parts Lists
Notes Window is unlabeled but window is visible when there is a note available.	List Notes Control	Displays Public and Private Notes made by the user for that page.
Graphics/Picture Window is unlabeled.	Pictures Control	Displays Figures associated with that page. Version 5 centers the figure in the window. Topics without pictures do not display the picture

### Interactive Maintenance Library User Guide

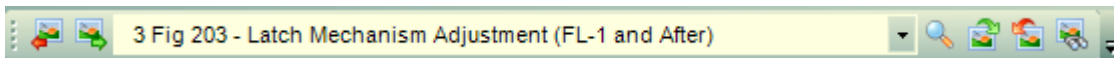
Version 4 Window	Version 5 Control	Function
		window but span the text window the width of the screen.
Selection List	Shopping Cart Tab	User adds parts to the shopping cart from Interactive Parts and Wires Catalogs.

Docked controls can also be pinned  or un-pinned . When a control is pinned, it will stay visible inside the IML Viewer interface. If a control is un-pinned, it will be hidden and accessible by a tab docked on an edge of the IML Viewer application. If you use the mouse to hover over and click on the hidden tab, the control will show itself again. You can pin/un-pin a docked control by clicking on the pin icon on the title bar of the control.

The Built-in hidden tab for the TOC is located on the left edge. The Shopping Cart hidden tab is on the bottom left.

#### Pictures Control

From left to right:



Previous Picture (F5); Next Picture (F6); Fig Number and Title; Pull-down arrow for Figure Selection List; Zoom..., Rotate Clockwise (Right), Rotate (Counterclockwise) Left, and Mini-Map.

The pictures window displays graphic/figures which are part of the currently viewed page. You have the ability to pan around a picture by holding the right mouse button while dragging the picture around the window. You can zoom in by holding down the left mouse button and drawing a box (rubber-band zoom) around the area you wish to enlarge.

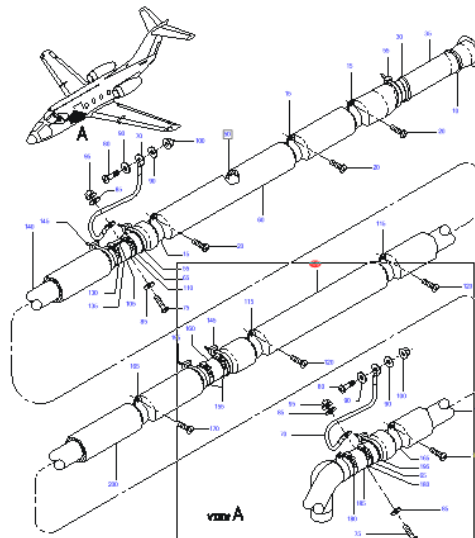
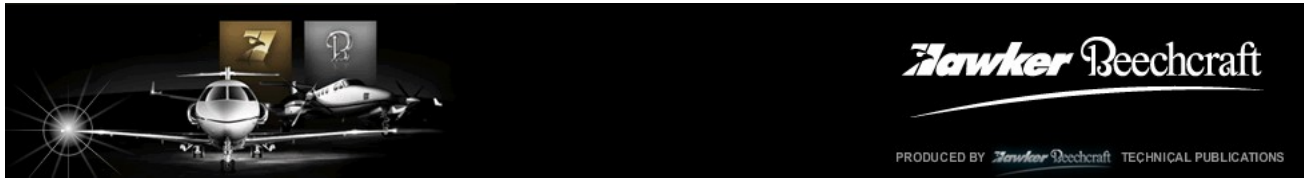


Figure 9 - Picture with rubber-band zoom.

After Zooming the picture, Right clicking restores the picture to the default 'Fit-to-window' view.

#### How to Zoom in on a Picture

1. Left-click on the picture and hold the mouse button down.



## Interactive Maintenance Library User Guide

2. Drag the mouse to create a zoom 'rubber band'.
3. Release the mouse button to zoom into the picture.
  - Alternatively, you can click anywhere on the picture and use the mouse-wheel to zoom in and out of the picture.
  - You can also change the zoom level by selecting an option from the zoom combo box.

Once the picture is larger than the viewable area, you will be able to pan around a picture, thus changing the location of the scrollbars and navigate around the picture easily.

### How to Pan a Picture

1. Right-click on any point on the picture and hold the mouse button down.
2. Drag the mouse in the opposite direction to which you wish to pan the picture. As you move the mouse, the picture will scroll with the mouse movements.
3. Release the mouse button to stop panning.

### The MiniMap

A MiniMap provides a full view of the currently viewed picture in a small window that can be repositioned anywhere on the picture control. It can be resized and will always show the complete picture. When the main picture is zoomed beyond the outer edge of the MiniMap, a green rectangle will show around the viewing area of the main picture.

### Interactive Maintenance Library User Guide

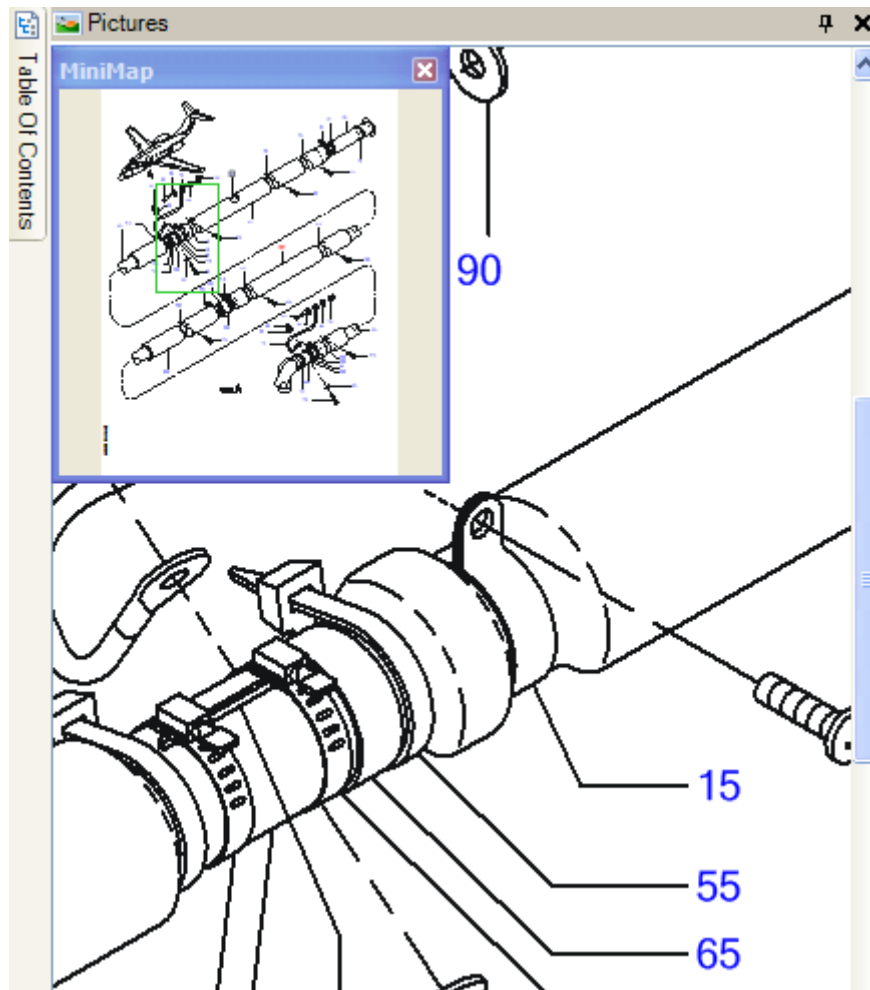


Figure 10 - Picture Control with Mini-map

To show or hide the MiniMap click the command button that resides to the left of the zoom combo box. Clicking on any point on the MiniMap will center the viewing rectangle at that point on the main picture. You can also left-click and drag the mouse cursor around on the MiniMap, which will then pan the picture.



Figure 11 - Show/Hide mini-map button

#### List Notes Control

IML Viewer default scheme displays the List Notes Window.

#### Text Window

The Text Window in Parts Catalogs display parts list information or embedded documents (e.g. - PDF, Interactive documents and/or HTML pages). If you click on a callout on the Figure, the corresponding entry in the parts list is highlighted. Conversely, selecting an entry from the parts list will highlight that callout on the figure.

### Interactive Maintenance Library User Guide

ITEM	PART NUMBER	DESCRIPTION	USABLE ON CODE	UNITS PER ASSY
<input type="checkbox"/>	120 MS35207-263	SPARES REPLACEMENT FOR: AN735D43 ATTACHING PARTS * SCREW	FE	2
<input type="checkbox"/>	- 125 45A63143-081	* DUCT ASSY- FOR SPARES ORDER: 45A63143-125	N	1
<input type="checkbox"/>	- 125 45A63143-111	* DUCT ASSY- FOR SPARES ORDER: 45A63143-125	P	1
<input type="checkbox"/>	- 125 45A63143-125	* DUCT ASSY- SPARES REPLACEMENT FOR: 45A63143-081 45A63143-111	FE	1
<input type="checkbox"/>	130 AN737TW91	* CLAMP- USED ON PART NUMBER: 45A63143-081	N	1
<input type="checkbox"/>	130 AN737TW74-91	* CLAMP- USED ON PART NUMBER: 45A63143-111 45A63143-125	FE	1
<input type="checkbox"/>	135 SLOOT-10-16	* DUCT-FLEXIBLE	FE	1
<input type="checkbox"/>	140 45A63194-005	* DUCT	FE	1
<input type="checkbox"/>	145 MS3367-7-9	* STRAP-TIE	FE	2
<input type="checkbox"/>	150 45A63143-017	* INSULATOR- USED ON PART NUMBER: 45A63143-081	N	AR

Figure 12 - Text Control displaying an Interactive Parts List

Right clicking on a parts list opens a context menu which provides access to common functions as well as an option to show a toolbar on the control. The context menu options are the same as those which appear on the toolbar.

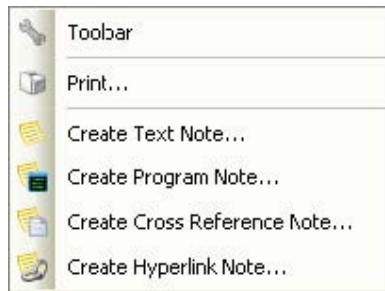


Figure 13 - Parts List Menu

### Navigating an IML Book using the Built-in Table of Contents Control (TOC)

In addition to using the Interactive customized HBC menu system you may also use the Viewer's built-in TOC. Once you have opened an IML book, the Table of Contents control lists all of the pages inside the book in page order. Clicking on a page will open it in the viewer text control window.

#### Table of Contents Control

The table of contents control lists the pages contained in an IML book. By selecting one of these entries, IML Viewer will load that page's contents into the viewer. Each entry in the table of contents contains the page title, and/or the page number/reference. If a page contains child pages, an plus sign icon will appear beside the page entry. Clicking the plus sign will expand or collapse its child pages. Chapter Listings contain child pages of the contents.

### Interactive Maintenance Library User Guide

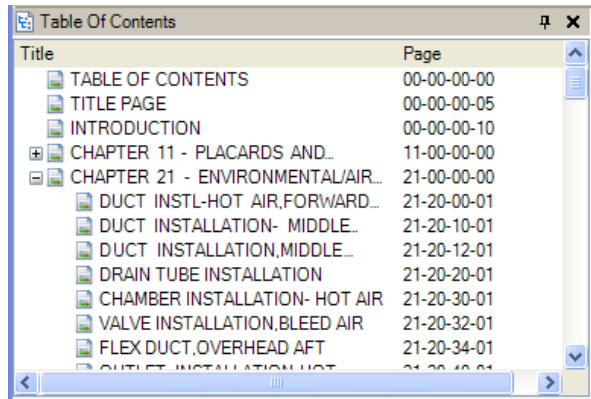


Figure 21: Table of Contents - Hierarchy Mode


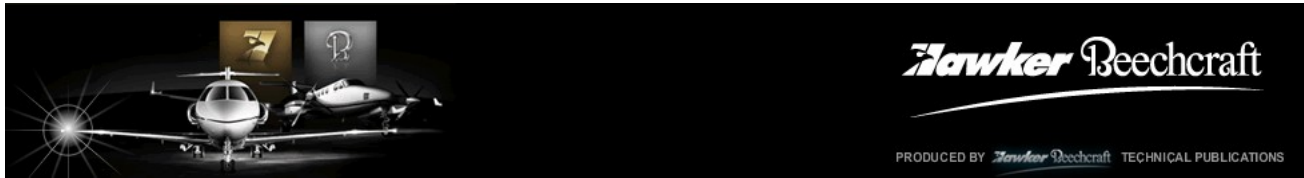
Right clicking on the table of contents control opens a menu which provides access to common TOC functions. Click the Toolbar  to display the Table of Contents Toolbar at the top of the TOC control window.

Table 4 - TOC Toolbar Icons/Description

Button	Function
<b>Save TOC</b>	Saves the Table of Contents tree to a CSV file.
<b>Expand Everything</b>	Expands the table of contents tree.
<b>Collapse Everything</b>	Collapses the table of contents tree.
<b>Page Order</b>	Default View: Page Order.
<b>Hierarchy Order</b>	<b>Not Recommended:</b> Switches view to Hierarchy Mode.
<b>Find Previous Position</b>	Disabled: Finds the previous position of the current page in the hierarchy.
<b>Find Next Position</b>	Disabled: Finds the next position of the current page in the hierarchy.
<b>Book Information</b>	Disabled: However, holding your mouse pointer over the grayed out icon shows a Mouse over tip that Displays the number of pages listed in the TOC.



### Interactive Maintenance Library User Guide

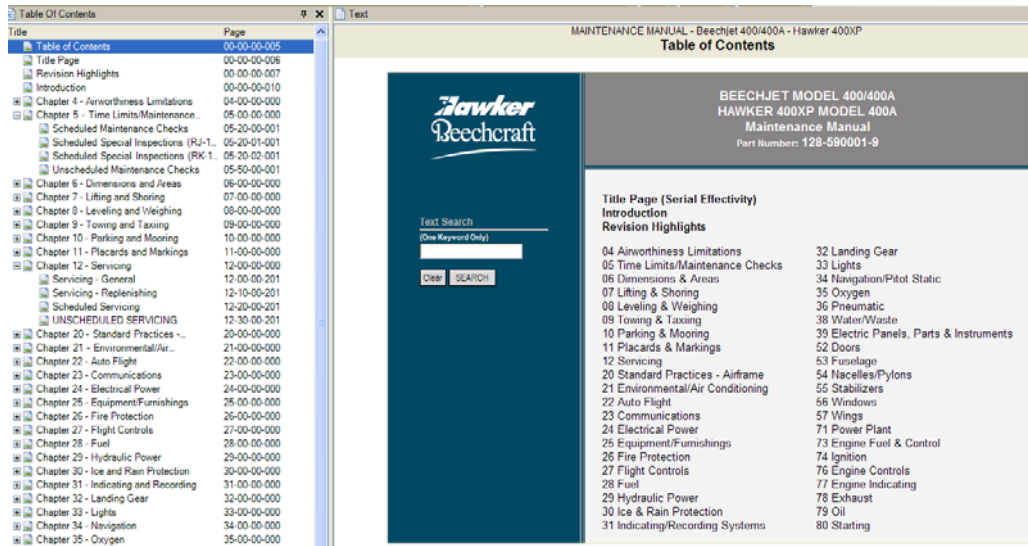


Figure 14 - Built-in Table of Contents on the Left – Book Menu Style TOC on the right

### Parts and Wiring Diagram Manual Text Window and Table of Contents

Interactive Parts/Wires Catalogs do not have the standard chapter TOC. The Chapter Table of Contents are indented as illustrated: grey shaded arrows indicate a link to that figure. Subject Titles organize the linked figures for that subject.

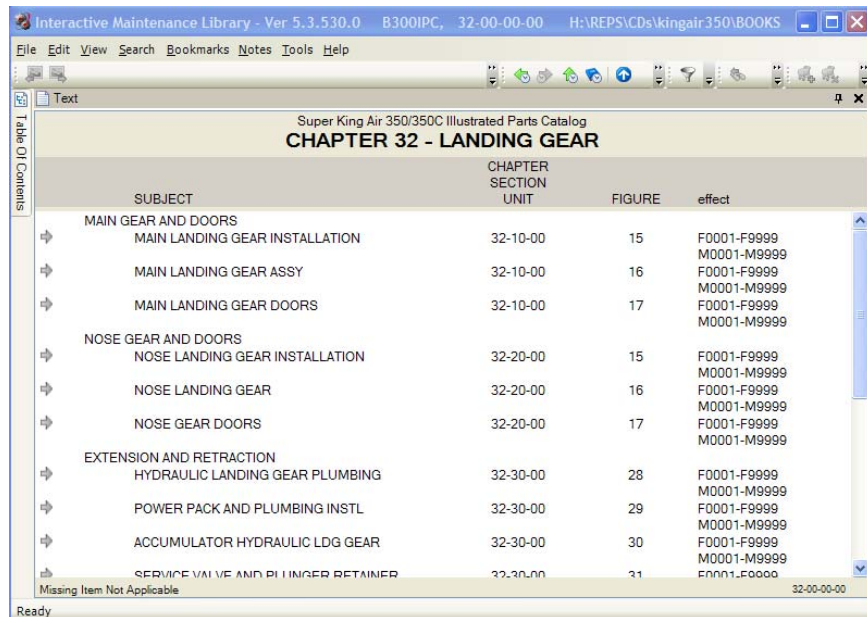
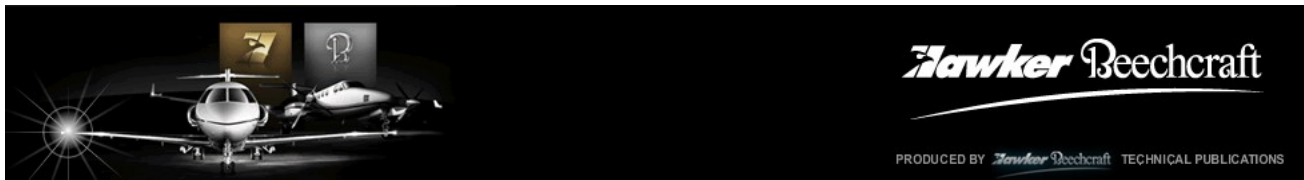


Figure 15 – Typical Parts Interactive Chapter TOC

The Parts list may also have built-in links to another figure. The grey shaded arrow indicates a link from that part to a related location in the parts catalog. Double click on an item that has a grey arrow to jump to the related location.



### Interactive Maintenance Library User Guide

➔	☐	110	33000-105	• LANDING GEAR ASSY-NOSE FOR SPARES ORDER: 33000-107 FOR DETAILS SEE: 32-20-01-01	A	1
➔	☐	110	33000-107	• LANDING GEAR ASSY-NOSE FOR DETAILS SEE:	FE	1

Figure 16 - Linked Part

### Built-in Portable Document Reader (PDF)

Previous Viewers were dependent on Adobe Reader. Viewer 5.x has a proprietary PDF reader to display PDF Books and does not access Adobe Reader.

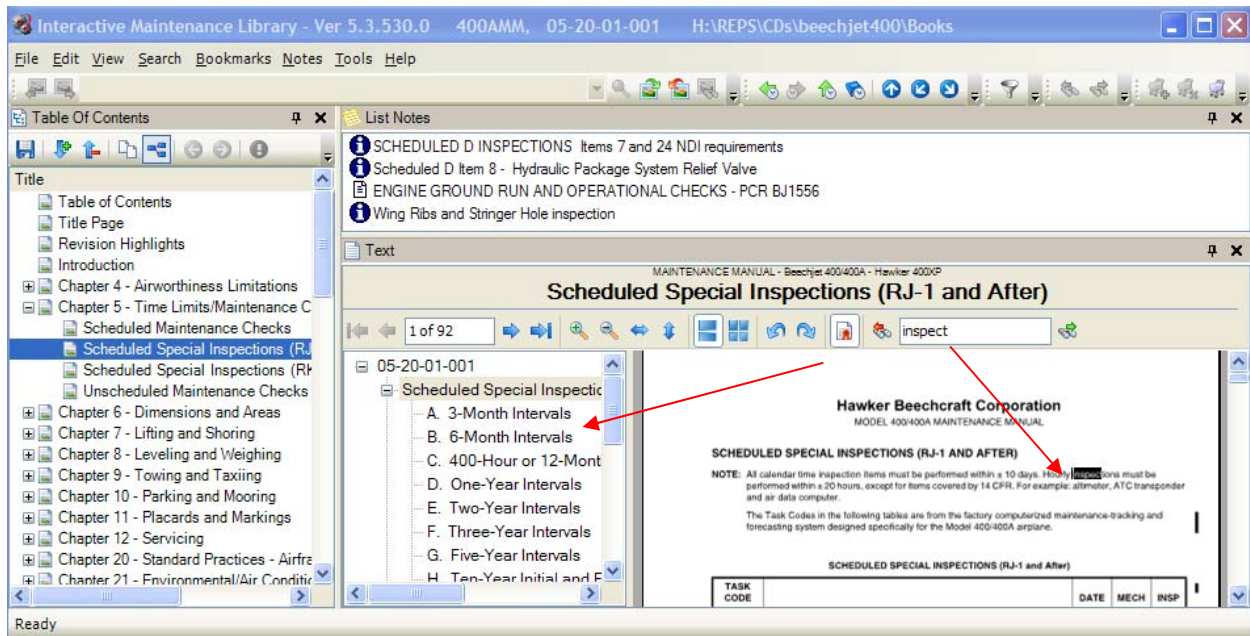
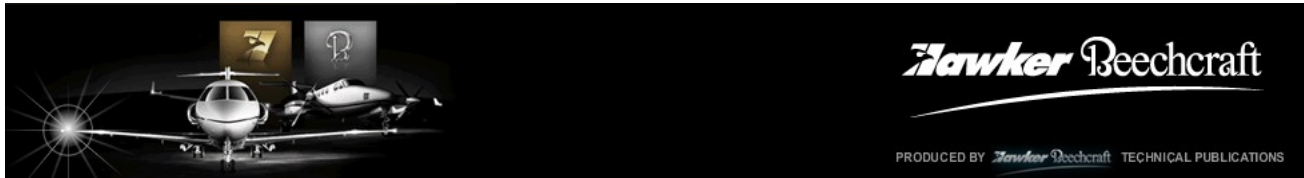


Figure 17 - PDF Reader Environment

When you open a manual in a PDF format, the Viewer invokes the built-in PDF Reader and displays the page in the Text Control Window. If the PDF has been Bookmarked the Bookmark icon will be available. Click the bookmark icon to display the bookmark panel to the left of the Text Window.

Notice that this illustration has the Built-in TOC pinned which anchors the TOC in the open position. The Built-in Viewer TOC is an easy way to move from place to place in a PDF Book without having to page back and forth between Menus and Pages or a Chapter TOC. The Built-in TOC can be 'unpinned' and reduced to TAB access by clicking the push-pin Icon.



## Interactive Maintenance Library User Guide

### PDF Toolbar Features from Left to Right



Figure 18 - PDF Reader Features

- ◆ **First Page Left Blue Arrow** - will take you back to Page 1 if you are on a page other than page 1.
- ◆ **Page forward** and **Page backward** - Use the blue arrows or type the page number directly in the page number box to go to a specific page. Right Clicking the Scroll Bar gives you additional options for moving around the document.
- ◆ **Last Page Blue Arrow** - takes you to the end of the PDF document.
- ◆ **Zoom in** and **Zoom out**.
- ◆ **Fit Width** and **Fit Height**.
- ◆ **Single Page View** or **Double Page View**.
- ◆ **Rotate Left** and **Rotate Right** changes the page orientation.
- ◆ **Bookmark Icon** - When grayed out the PDF does not have Bookmarks. When active Bookmarks are available within the PDF document.
- ◆ **Search Box** - Allows you to perform single or multi-word (consecutive phrases) searches. Previous and Next Match finds additional occurrences in the document.

### Printing the PDF document

To Print, click on **File > Print** on the menu bar and set the Available content to **Text** in your printers Print Dialog Box. Selected text and Zoomed printing are not available in a PDF document. Printing a single page, the entire document or a range of pages are available print options.

### PDF Hyperlinks

Text highlighted in **blue** on the face of a PDF document indicates a Link to that section. Some Links on List of Publications pages are not blue. Move your mouse over the List of Publications table of contents. If there is a link to that section, the mouse will turn into a pointy finger.

Depending on how the link was originally created, the link may not be active. In this case open the Bookmarks or the Built-in-TOC to move around the document.

### Shopping Cart (Selection List) Control

The Shopping Cart allows you to add or remove items from an IML Parts Catalog which can be exported to different files. Double clicking on an entry in the parts list or the figure will add the part information to the selection list in the shopping cart. You can also add blank entries to the selection list and edit the information yourself.

Catalog	Part Number	Description	Qty	Figure Num	Item Num	Units	Comments
XPIPC	25UM209	NUT	1	32-10-00-20	45		
XPIPC	A103QC	NUT	1	32-10-00-20	60		
PRIPC	SBP-EU06-03	FASTENER-BLIND	1	57-50-00-01	130		

Figure 19 - The Shopping Cart Control

The Fields in the Shopping Cart are customized according to the type (Parts or Wires) of catalog or manual. You can edit the fields that have a **box around** them.

## Interactive Maintenance Library User Guide



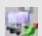
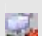


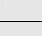
Table 5 - Shopping Cart Field Descriptions

Field	Description	Can Edit
Catalog	Each Manual/Catalog is assigned a Descriptive Book code that appears in this field.	-
Part Number	Part Number pulled from the Part Number Column.	Yes
Description	The first line of the description for the part.	-
Qty	The Qty needed.	Yes
Figure Num	Figure Number.	-
Item Num	Item Number assigned to that part.	-
Units	Not used.	-
Comments	Use this field to enter additional lines of the description or instructions, etc...	Yes

The Shopping Cart has its own toolbar and short-cut menu which provide access to common shopping cart functions. Right Click the Shopping Cart window to display the shortcut menu. The shortcut menu provides additional functions for saving, exporting or printing the shopping cart.

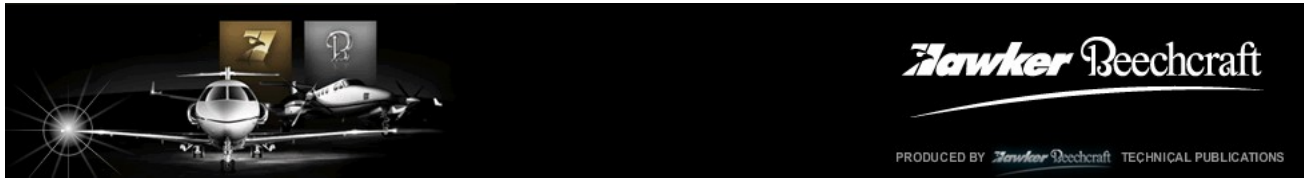


Figure 20 - Shopping Cart toolbar

Button	Description
 <b>Go To</b>	Highlights the part in the parts list that is currently highlighted in the shopping cart list. If this part exists in another book location IML Viewer will open the viewer to that location and highlight the part in the Parts List and Figure.
 <b>Add Blank Entry</b>	Adds a new blank entry to the Shopping Cart.
 <b>Edit Current Entry</b>	Edits the first <span style="border: 1px solid black; padding: 0 2px;">editable field</span> in the highlighted item of your Shopping Cart List.
 <b>Remove Selection</b>	Deletes the <span style="background-color: yellow;">highlighted</span> Shopping Cart entry.
 <b>Print Shopping Cart</b>	Prints the current Shopping Cart.
 <b>Selection Display Format</b>	Opens a sub-menu displaying the available display formats to use when displaying the Shopping Cart List. Always use the IML Shopping Cart format.
 <b>Select Print Format</b>	Opens a sub-menu displaying the available print formats. Always use the IML Shopping Cart format.

### Notes

An often overlooked feature of IML is the ability to post a yellow sticky note to any page or menu in an IML book. There are two classes of notes, **Private** and **Public**. By default, Private notes reside on your computer's hard drive. Public notes usually reside on a network drive and are intended for everyone to see. A public note is an efficient way to make critical information available to all users of IML within your



## Interactive Maintenance Library User Guide

organization. You create Public notes in the same manner as Private notes except that you must first create a public note folder on your network's server and tell the IML viewer where the folder is.

### Setup Location for Public Notes and Public Bookmarks

1. Using Windows Explorer, create a folder on the network drive where the notes are to be stored. This folder must have read privileges for notes to function.
2. Click **Notes** on the Menu Bar and select **Configuration**.
3. Scroll the left pane of the configuration dialog to Notes and select Folders.
4. In **Public Notes Folder** box, enter the file path or browse to the folder location created in step 1.
5. Press the **OK** button.

**NOTE:** Each person connected to the network must perform steps 2 thru 5 to have access to the public notes. This will update the IML initialization file with the path to the public notes folder.

IML Viewer notes allow a user to store and review information inside the viewer. Notes can be created using the Notes dialog which is accessed from the Notes menu. Select the **Notes...** menu item.

The notes dialog box is split into two main sections. The left side is a sorted list of notes currently accessible to the viewer. The right pane displays the information about the currently selected note. The right pane will change depending on the type of note selected in the list.

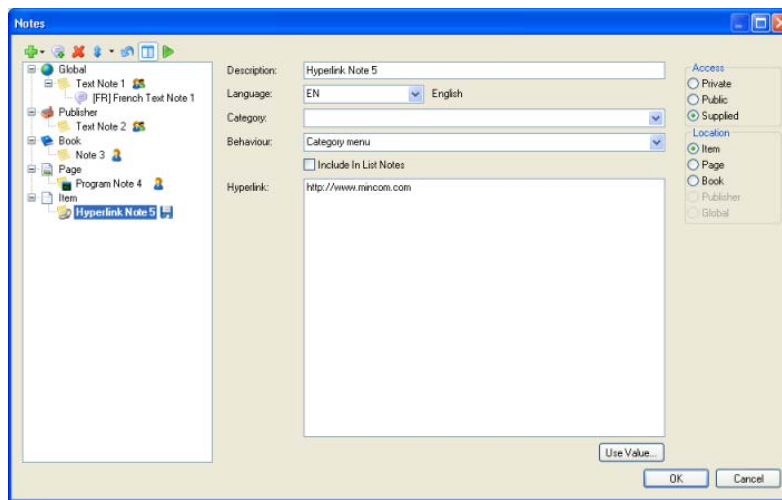
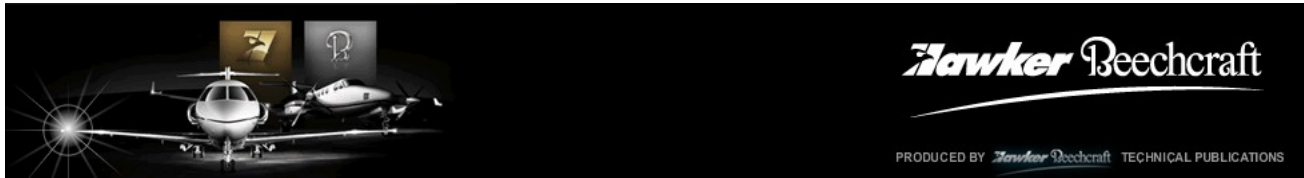


Figure 21 - Note Manager

IML Viewer provides a number of note types which vary in functionality. The note types and a description are given in the table below.

<b>Program Note</b>	A program note allows you to link to an application such as Word, PDF Document, Excel or some other document within the page.
<b>Cross Reference Note</b>	A cross reference note allows you to create a link between two IML books, pages, picture or parts list items.
<b>Text Note</b>	A text note allows you to store text that opens in a note viewer when activated.
<b>Hyperlink Note</b>	A hyperlink note is used to create a hyperlink to a website.



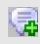
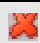

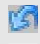

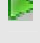


## Interactive Maintenance Library User Guide

### Editing / Deleting Notes

Click Notes on the Menu Bar and select Notes... from the dropdown list. Select the desired Note you wish to Edit from the Notes List. Note Details will display in the right section of the Notes dialog. Edit the Note and click OK to save changes. To delete the note, click the delete icon from the Notes toolbar. The notes toolbar provides access to note functions as well as customizing how notes are sorted and displayed.

Table 6 - Notes Toolbar Description

Button		Description 
	<b>Add Note</b>	Adds a note to the note collection.
	<b>Add Translation</b>	Currently Disabled: Adds a note translation to the currently selected note in the list.
	<b>Delete Note</b>	Deletes the currently selected note.
	<b>Sort By</b>	Determines how categories will be sorted and displayed. Available options are; Name - sorts categories alphabetically by their name. (Default setting) Access -groups categories into their respective access modifier groups and then sorts them alphabetically within these groups. Location -groups categories into their respecting location modifier groups and then sorts them alphabetically within these groups.
	<b>Undo Changes</b>	Reverts notes to last saved state. Any changes made to any notes in the dialog that happened after the last save will be undone.
	<b>Show/Hide Details</b>	Shows or hides the notes details window.
	<b>Execute Note Action</b>	Executes the currently selected note.

### Creating Notes

To create a note, click on the Add Note button and select the type of note you wish to create. A new note of that type will appear in the note list, and the note window will open a blank form. Once you have entered all required information, Click OK to save your note changes.

If the OK button is disabled, there is incorrect or missing information in one of the notes that is being currently edited. Incorrect or missing information is highlighted by an attention icon next to the field which needs to be altered so the note can be saved. Clicking Cancel will discard any changes made to notes since the last save and close the notes window.

#### Parts List Item Notes

Notes may be added to a parts list by right clicking on any entry and selecting this option from the drop down menu.

Select an Item and right click your mouse. A short cut menu displays. Select Text Note. The Text Note dialog window opens. Add your comments and click OK.

## Interactive Maintenance Library User Guide

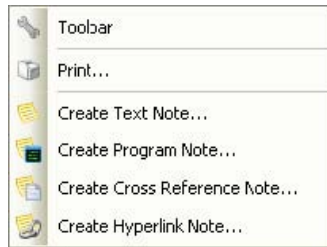
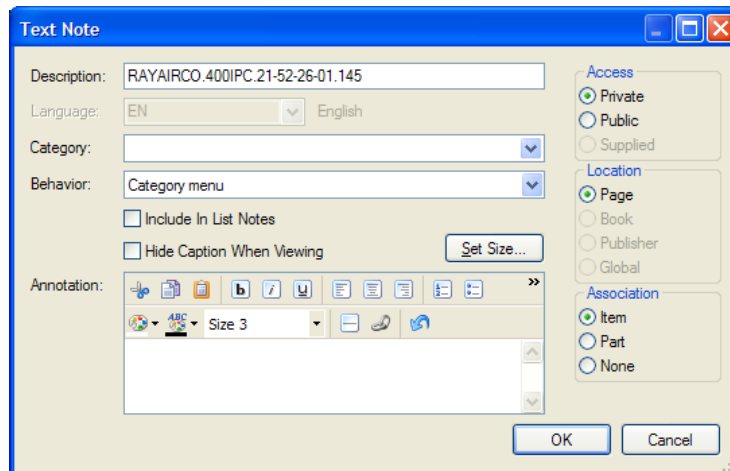


Figure 22 - Parts List Context Menu

The Description will have a path to the Item. Replace this Description with your own short title description. For example, Description for an item specific note may consist of 'Item 145 – Your Own Short Title'. The Association for the Item is already selected. Change the Access to Public if you want others to be able to see the note. Set the Category and check 'Include in List Notes'. Type the Information about the part in the Annotation Window.

Version 5 has incorporated additional text flexibility such as font size, bold, italic, underline, color, bullets, numbered list, font and background color, etc. **IMPORTANT:** Remember to Click OK when you are finished or the note will not be saved!



If an item in the parts list has a note associated with it, a small note icon will display in the first column. A tooltip will display a Title/Description if you hover over the note with your mouse. Double-Clicking a note icon will execute that notes action (i.e. Open the Text note for viewing or follow a hyperlink to another location).

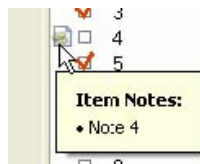


Figure 23 - Parts List Tooltip on Note

### The Notes Explorer

The notes explorer dialog allows you to view all note types that are available from your current position in an IML book. This dialog is very useful if there are a large number of notes and you wish to find a certain note to view. Using the notes explorer dialog you can also delete notes that are no longer required which is valuable when maintaining notes which are shared by a large number of users.

## Interactive Maintenance Library User Guide

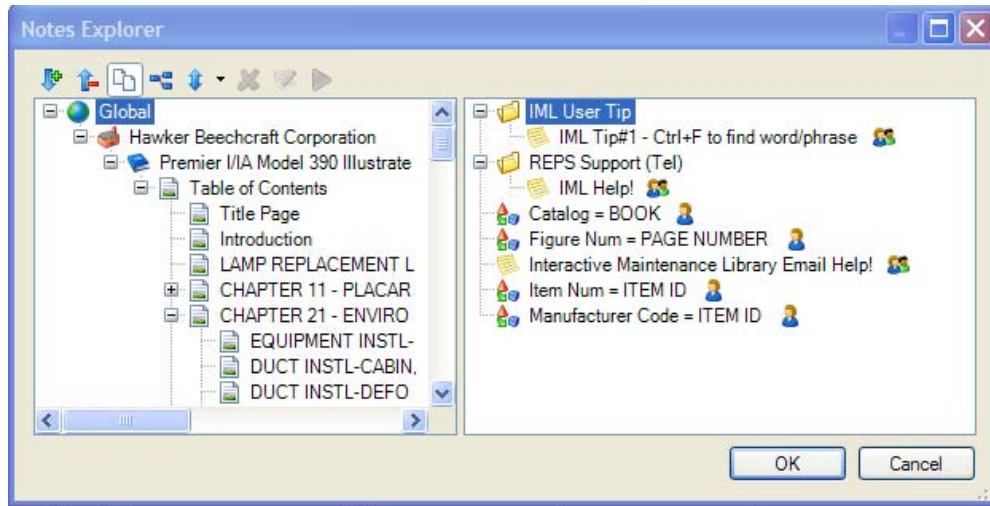


Figure 24 - Notes Explorer

### Bookmarks

An Interactive Maintenance Library (IML) bookmark is used in the same manner as a bookmark in a paper manual to easily find an often used page. A bookmark can be active to one or all of your IML manuals and behaves as a hyperlink direct to the bookmark. If you operate IML from a network you can also make bookmarks active to other IML users on the network.

#### Creating Bookmarks

1. Open the manual to the location you want to bookmark. You can also place a bookmark on a menu page. Whatever is showing when the bookmark is created is the place that will be bookmarked.
2. On the upper IML tool bar select **Bookmarks**.
3. Then select **Create Bookmark...**
4. The Bookmark control window opens to the Direct Tab.
5. Replace the 'path' information that is auto-inserted in the **Name** box with a short but descriptive title, i.e. "900XP Main Gear Removal". It is important to give the Bookmark a recognizable title since this title displays in the Bookmark list.

### Interactive Maintenance Library User Guide

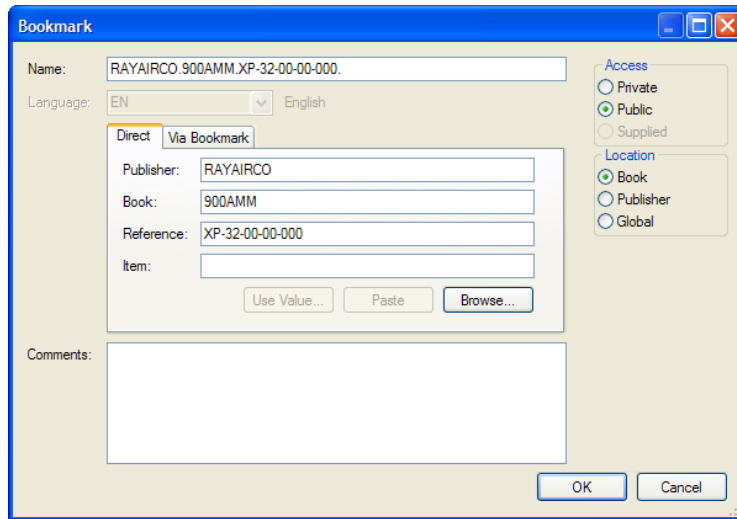


Figure 25 - Bookmark Control Window

6. **Publisher, Book, and Reference** data are automatically set to values of the book (IML manual) that you have open.
7. **Item:** Is used in Illustrated Parts Catalogs and Wiring Diagram Manuals to bookmark a specific item number. If you have highlighted the item in the Parts List you want to bookmark, before you opened the Make Bookmark dialog box, the item number will be automatically filled in for you. For Wiring Diagram Manuals, the Reference Designator number is used. Otherwise you can enter the item number, i.e. "110" in the Item box.

NOSE GEAR DOOR MECHANISM					
ITEM	PART NUMBER	DESCRIPTION	USABLE ON CODE	UNITS PER ASSY	
<input type="checkbox"/>	105	SP90C8	• PIN-SPLIT	2	▲
<input type="checkbox"/>	106	SP90E10	• PIN-SPLIT	2	■
<input type="checkbox"/>	110	A103LS	• NUT	2	▼
<input type="checkbox"/>	115	SP122L	• WASHER	2	▼

Missing Item Not Applicable 32-20-00-10

Figure 26 – Bookmarked Selected Part in Parts List

Parts/Wires Bookmarked Part List Items are highlighted and takes you directly to that item in the Parts List.

8. **Comments:** This is an optional field to add clarifying statements to the bookmark. Comments are not displayed when using a bookmark. They are accessed only by "Editing" the bookmark (See Editing a Bookmark below). This field might be useful in Global bookmarks to note the date of creation and the person who created the bookmark.

**Access:**

Select "Public" or "Private" radio button as appropriate.

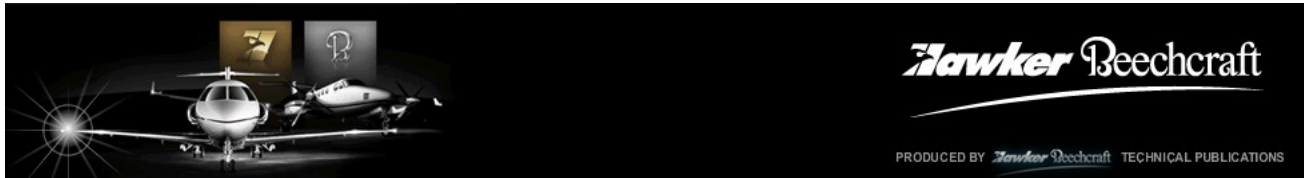
- "Private" makes the bookmark accessible only to the computer it was created on.
- "Public" makes the bookmark accessible to all IML users on a network.

**NOTE:** See 'Setup Location for Public Notes and Public Bookmarks' procedure.

**Location:**

"Book" makes the bookmark active only when the selected book is active.

"Publisher": Do not use.



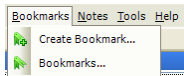
## Interactive Maintenance Library User Guide

“Global” makes the bookmark active in all IML books and menus.

9. Select “Book” or “Global”
10. Click OK if you are satisfied with the bookmark.

### Managing Bookmarks

Direct bookmarks point directly to a book, page, or entry list. Via Bookmarks are bookmarks that point to previously created bookmarks.



Bookmarks are managed by the Bookmarks dialog which is accessed by opening the Bookmarks menu and selecting the Bookmarks... menu option.

The bookmarks dialog is split into two main sections, the bookmark list contains a sorted list of all bookmarks, and the details section displays information about the currently selected bookmark.

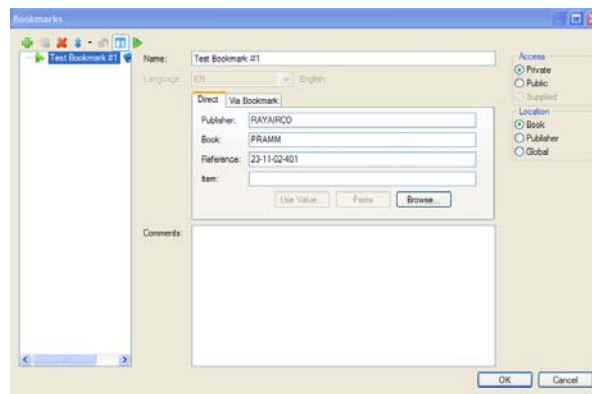
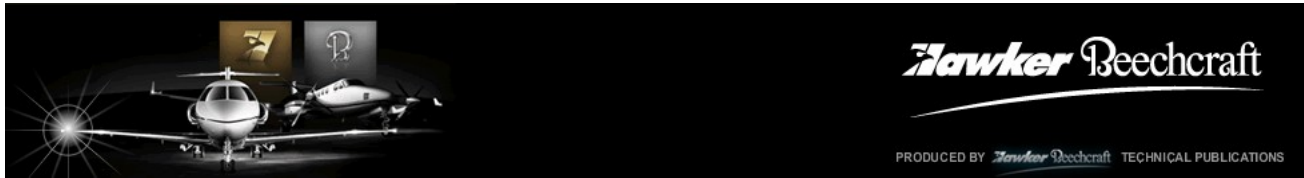


Figure 27 - Bookmarks Dialog

### Editing Bookmarks

The bookmarks dialog contains a toolbar which allows you to add, edit or delete bookmarks. The toolbar also allows you to change how bookmarks are viewed in the Bookmarks dialog.

Button		Description
	<b>Add Bookmark</b>	Adds a bookmark to the bookmark list.
	<b>Add Translation</b>	Currently Disabled: Adds a translation for the currently highlighted bookmark.
	<b>Remove Bookmark</b>	Deletes the currently selected item in the bookmarks list.
	<b>Sort By</b>	<ul style="list-style-type: none"> <li>◆ Determines how bookmarks will be sorted and displayed. Available options are;</li> <li>◆ Name - sorts bookmarks alphabetically by their name.</li> <li>◆ Access -groups bookmarks into their respective access modifier groups and then sorts them alphabetically within these groups.</li> <li>◆ Location -groups bookmarks into their respecting location modifier groups and then sorts them alphabetically within these groups.</li> </ul>



## Interactive Maintenance Library User Guide

Button		Description
	<b>Edit Bookmark</b>	Bookmarks > Select Bookmark from list that you want to Edit and then make changes to the Bookmark displayed in the Bookmark dialog right window. To save changes, click OK.
	<b>Undo Changes</b>	Reverts bookmarks to last saved state. Any changes made to any bookmark in the dialog that happened after the last save will be undone.
	<b>Show/Hide Details</b>	Shows or hides the details window in the bookmarks dialog.
	<b>Go to Bookmark</b>	Opens the currently selected bookmark in the bookmarks list.

### Using a Bookmark

1. On the upper IML tool bar click on Bookmarks
2. Bookmarks will be listed
3. Click the bookmark you wish to go to.
4. Bookmarks will always open to the top of the page they are referencing.

**NOTE:** “Book” bookmarks can be selected from anywhere within the manual where it was created.  
 “Global” bookmarks are available and can be selected from anywhere within the IML Viewer.

### Searching

IML Viewer provides book search functions. The searches available to a specific book type appear in the Search Menu pull down list.

In searching Parts Numbers or Descriptions, the old adage, ‘Less is More’ often applies. If you know part of a part number, that partial number can be entered and the search will find all instances of that partial string of characters. Using a partial search is especially useful if a ‘full-part number search is fruitless. If the search list is too expansive, add additional characters/numbers to the search to narrow the results.

The types of Searches available in IML are as follows:

**Text/Documents:** .....One Keyword Only Text Search.

**Page Titles:** .....Single keyword search of any manual’s Main Table of Contents.

**Part Number:** .....Searches the Part Number field of the Parts List.

**Part Description:** .....Searches the Description field of a Parts List.

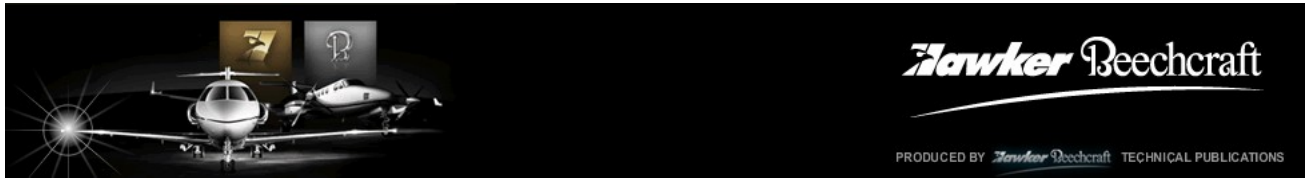
**Part Number/Description:** ...Built-in on the menu’s for Interactive Parts Catalogs and some Wiring Diagram Manual Menu’s. You can search single words or multiple words. Multi-word searches have to be an adjacent ‘phrase’. For example, the words **landing** and **tire** will not be found, but it will find instances of the phrase **landing gear**. Searches both the Part Number field and the Description Field in the Parts Listing.

**P/N – Description – Wiring Ref Designator:** Search looks in all 3 locations.

The table below illustrates the type of Searches available in various document formats.

Table 7 - Types of Searches

Document Format	Menu Search Box	Page Titles	Documents	Part Numbers	Part Descriptions	Wiring Ref Designator	Built in PDF Search
Interactive Books	Text Search	✓	✓	N/A	N/A	N/A	N/A



### Interactive Maintenance Library User Guide

Document Format	Menu Search Box	Page Titles	Documents	Part Numbers	Part Descriptions	Wiring Ref Designator	Built in PDF Search
Interactive Parts Catalogs	P/N and Description	✓		✓	✓		N/A
Portable Document Format (PDF) Text-based PDF	Not Available	Not Available	Not Available	Not Available	Not Available	Not Available	✓
Scanned PDF Documents	Not Available	Not Available	Not Available	Not Available	Not Available		Not Available
Interactive Wiring Catalogs	P/N-Desc-Ref Designator	✓	Not Available	✓	✓	N/A: Use P/N-Desc-Ref Desig. Combo	N/A

The Search Scope at the bottom of the dialog determines the books searched in. The scope can either be the current Book, the current book Category and subcategories, the current Publisher, or a user defined selection of Multiple Books.

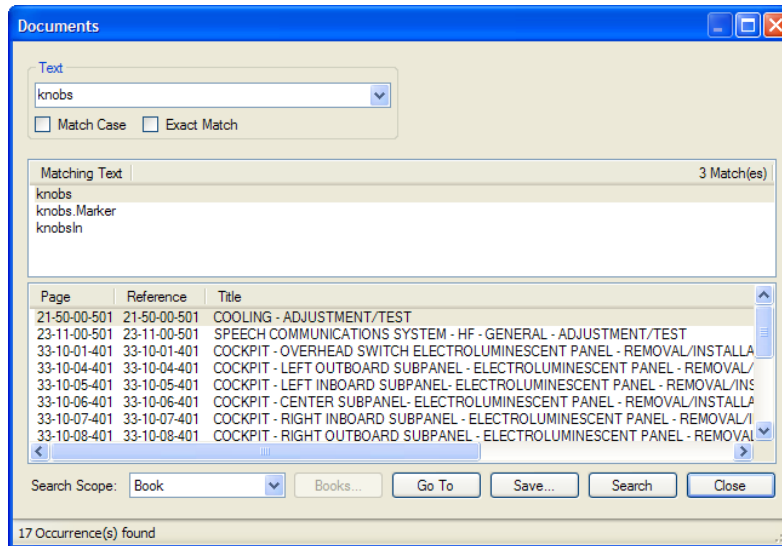


Figure 28 - Document Search with Results

Selecting Multiple Books will enable the Books button which when clicked, will open a Select Books dialog allowing you to choose which books will be searched.

### Interactive Maintenance Library User Guide

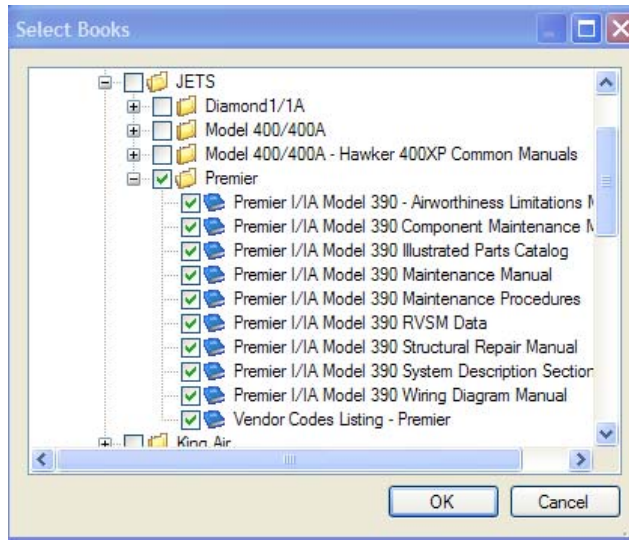
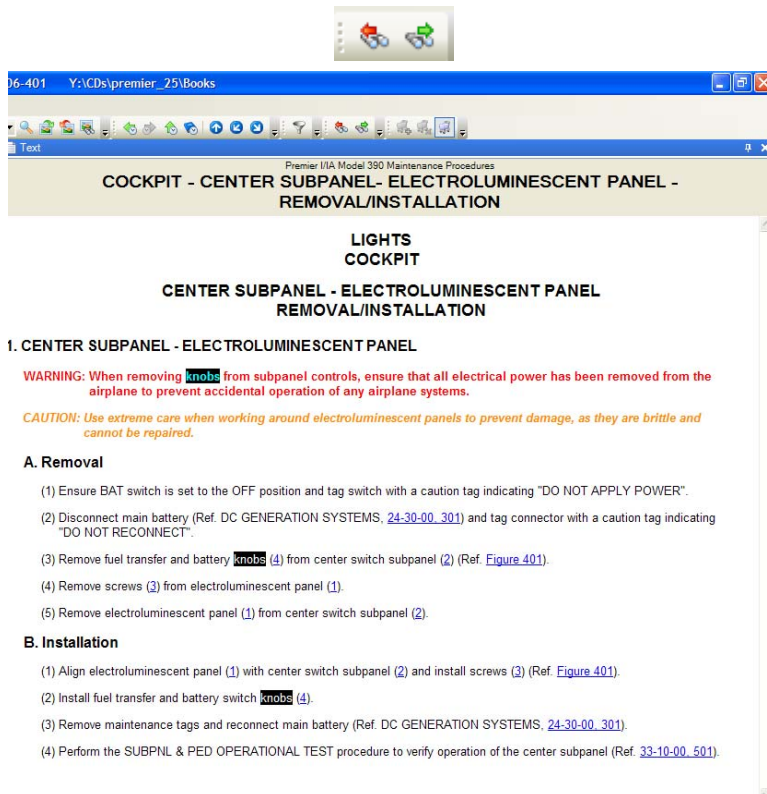
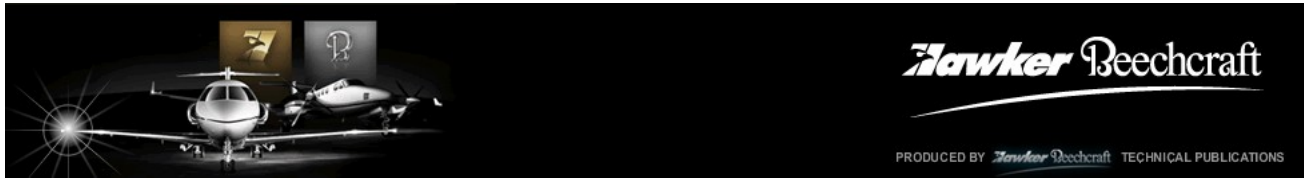


Figure 29 - Select Books Dialog from Multi Book Search

Once a search is completed, the matching page titles, books (if searching more than one book) and match information will be displayed in the search form. Selecting a matching page title will display all the matches found on that page in the match information list. By selecting a page, book or match and clicking the Go To button, IML Viewer will jump to that position in the book. You can page forward and then back through the instances found by using the Previous Search Results and Next Search Results buttons.





## Interactive Maintenance Library User Guide

### Windows Search

Ctrl+F is a standard MS-Windows feature you can use to find a word/phrase in the current text document Ctrl + F will open a Find dialog box. You can use this feature when you are in an IML Text document window.

1. Click anywhere in the text window
2. Ctrl+F 3. Type word or phrase you are looking for in the text window and search.

**NOTE:** This does not work in Parts/Wires Catalogs, Scanned PDF Documents or find words on Figures Search is limited to the interactive text document you currently have active.

### Filtering

Filtering allows you to filter document titles, pages, and parts to help you navigate through and locate information quicker. To open the filter dialogs, select Filter by Serial Number from the Edit menu.

#### Filter by Serial Number (EFFECT=) Dialog

Serial Number Filters apply your serial number to the Effectivities defined for parts catalogs. A Key to the Usable On Code for Effectivities on each parts list is located at the bottom of the page. The Effectivities specific to your model are defined/described in the Introductions to each manual.

The Filter by Serial Number box allows you to view and change Serial Number Effectivity in the current book. Any changes made to these filters will only affect the view of the current book and the filter will be discarded when you start viewing a different book, or you close IML Viewer. Selecting the **EFFECT=** in the filter list on the left side of the screen will load possible filter values into the right side. Selecting or entering a value and clicking OK will set the Effectivity filter value.

The SN= and PSN= are preset defaults and entering information in them will not filter and may cause your EFFECT = filter to not function. Do not enter information in the SN= and/or the PSN= filters.

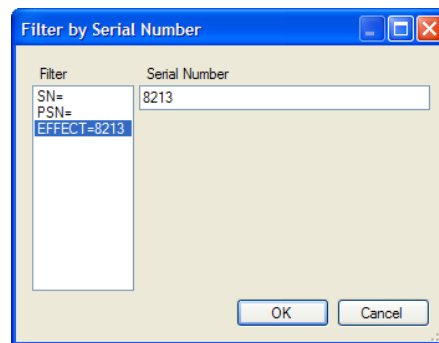



Figure 30 - Filter by Serial Number Dialog

Do the following to filter a parts catalog for your aircraft:


1. Click the Filter Button  on the Toolbar  
(Alternate Method: Click Edit > Filter by Serial Number...)
2. Click **EFFECT=**
3. Enter your Aircraft Serial Number without spaces in the Serial Number box.
4. Click **OK** to set the **EFFECT=** value.

The Viewer Status Bar displays the Serial Number you are using to Filter the Parts Catalog.




To change the filter to another aircraft:

### Interactive Maintenance Library User Guide

1. Click the Filter Button  on the Toolbar
2. Delete the Aircraft Serial Number in the Serial Number box.
3. Enter the New Serial Number
4. Click OK.

Do the following to remove a filter from a parts catalog:

1. Click the Filter Button  on the Toolbar  
Click EFFECT=
2. Completely delete the Aircraft Serial Number in the Serial Number box.
3. Click OK.

Notice the **EFFECT=** is no longer visible in the Status bar.



### Printing

Users can print Text, Picture and Text, Selected Text, Shopping Cart list, Parts list, Picture or zoomed area of the picture. All printing functionality is provided via a Print dialog that uses your default printer. Users can use print layouts to customize the output of printed Viewer content.

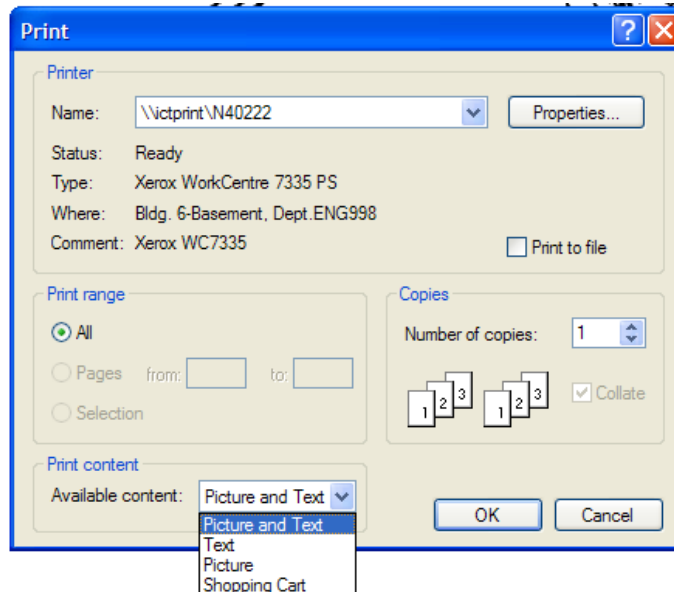


Figure 31 - Print Dialog Box

The Available Content combo box allows you to choose which content to print. Clicking OK will print the content to the printer.

# Appendix 1 – Contacts and Support Details

## Contact Information

---

### Publishing and IML Support

IML is easy to use. Help is readily available via a helpline (8:00 AM to 4:30 PM Central time). During off-hours, leave a voice mail message and your call will be returned within one business day. The IML software website provides the following:

Website: <http://pubs.hawkerbeechcraft.com> (Click IML Software Support)

- **Current CD Status:** Provides a downloadable PDF with Rev Dates and Distribution Dates of CDs.
- **Downloads:** Latest Software, Updates with detailed instructions.
- **How-To Documents:** Latest information by topic.
- **Submit a Question:** Launches an email to IML Software Support.



Figure 32 – Auto-Email for Help

To provide efficient responses, as a minimum, please include the following in your email:

- ◆ Name and phone number
- ◆ Company
- ◆ Contact Preference (email or call back from the helpline support agent)
- ◆ Airplane Model
- ◆ Manual affected
- ◆ Description of the problem
- ◆ Screen prints can be very helpful

### IML Software Support:

- Phone: 800.240.2959 or +1-316.676.3053
- Email: [IML@hawkerbeechcraft.com](mailto:IML@hawkerbeechcraft.com)

## Subscription Information

### Technical Manual Distribution Center (TMDC):

- Phone: 800.796.2665 or +1.316.676.8238
- Email: [TMDC@hawkerbeechcraft.com](mailto:TMDC@hawkerbeechcraft.com)
- Website: [http://hawkerbeechcraft.com/service\\_support/pubs/default.aspx](http://hawkerbeechcraft.com/service_support/pubs/default.aspx)

## Technical and Field Support

Hawker Beechcraft Corporation's technical and field support organization is the largest in general aviation. All of our technical team have access to cutting-edge technology and the latest information that are critical to properly support your aircraft.

Technical Support is available 24 hours a day.

- Phone: 800.429.5372 or +1.316.676.3140
- Email: [rapid\\_parts@hawkerbeechcraft.com](mailto:rapid_parts@hawkerbeechcraft.com)
- Website: [http://hawkerbeechcraft.com/service\\_support/tech\\_support/](http://hawkerbeechcraft.com/service_support/tech_support/)

## Ordering Spare/Replacement Parts

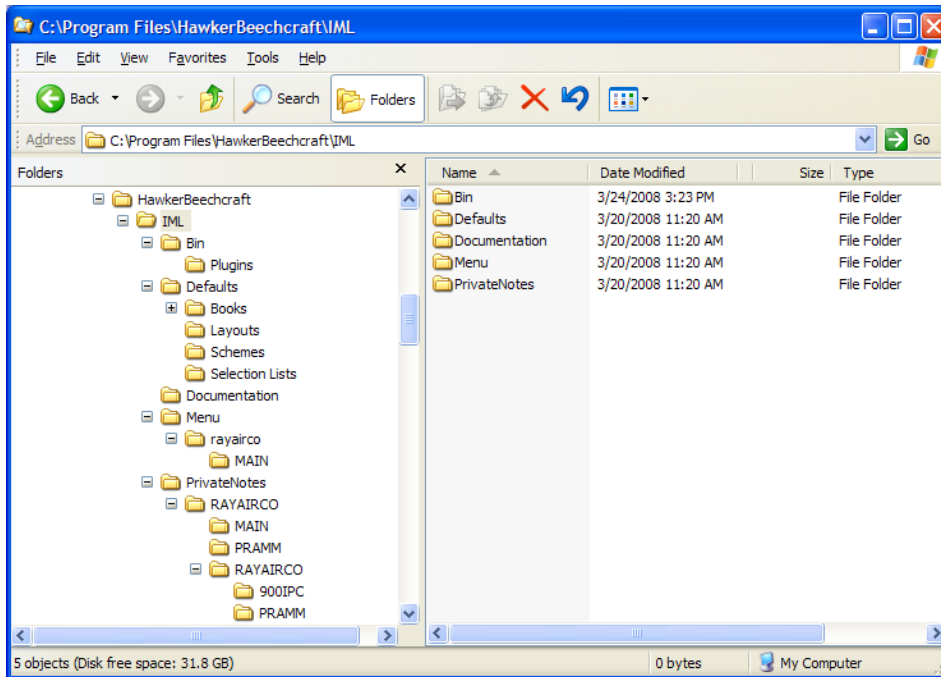
RAPID's call center is open 24 hours a day, 365 days a year for your convenience.

- Phone: 877.727.4344 and +1.316.676.3100
- Email: [rapid\\_parts@hawkerbeechcraft.com](mailto:rapid_parts@hawkerbeechcraft.com)
- Website: Website: [http://hawkerbeechcraft.com/service\\_support/rapid/default.aspx](http://hawkerbeechcraft.com/service_support/rapid/default.aspx)

## Appendix 2 – Installation Location Details

The following information is provided for I.T. Administrators. The C:\Program Files\HawkerBeechcraft\IML path and contents should not be moved or renamed.

### IML Viewer Program Files Location



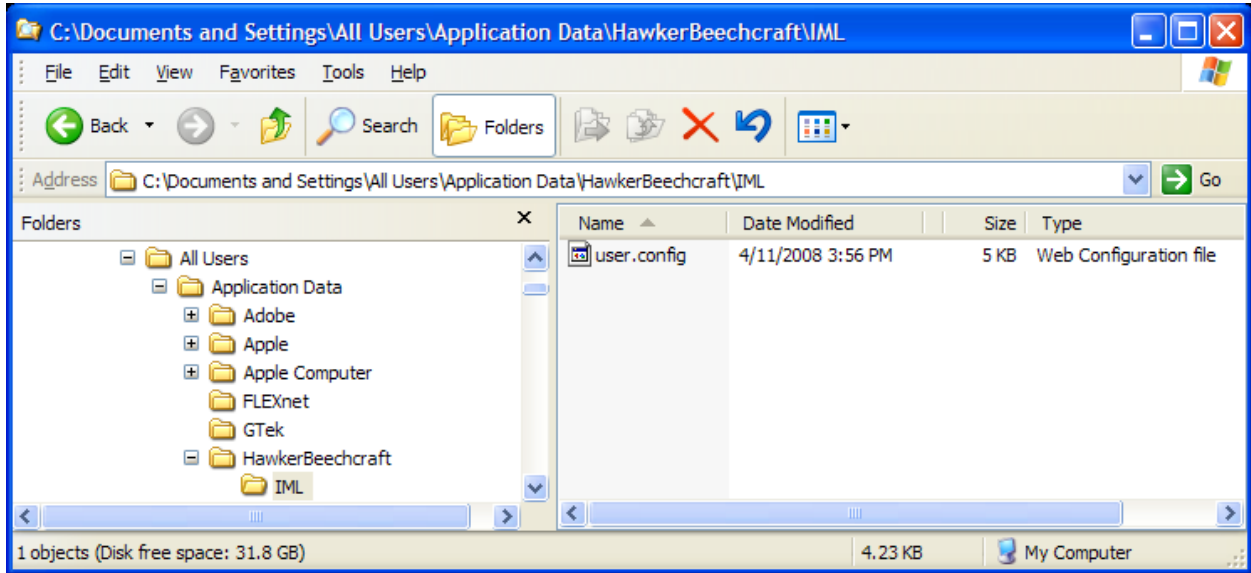
- ◆ **Bin Folder** contains the .NET plug-ins for the Viewer. None of these plug-ins should be manipulated in anyway at the folder level or within the Viewer configuration program by users.
- ◆ **Defaults Folder** contains the default settings and layouts for the customized IML Hawker Beechcraft Installation Schemes and Parts Catalog Shopping Cart.
- ◆ **Documentation Folder** contains the built-in Mincom User guide that can be accessed within the Viewer via the **Menu Bar > Help > IML Viewer Help**. Keep in mind this is the developers Help version and can be of some benefit, it does not cover the customization for our customers done by Hawker Beechcraft.
- ◆ **Menu Folder** contains the customized IML Main Menu. When the Menu has an update the update will be placed on the IML Software Support Downloads page on the web.
- ◆ **Private Notes Folder** contains all of the private notes made by individual users and are available only to users of the computer where the Viewer is installed.

**NOTE:** Public Notes are generally used for Network users and need to be set up with a network location, then mapped using the Viewer Configuration Tool.

Both Private and Public Notes, and how to create them, is found in the user guide documentation.

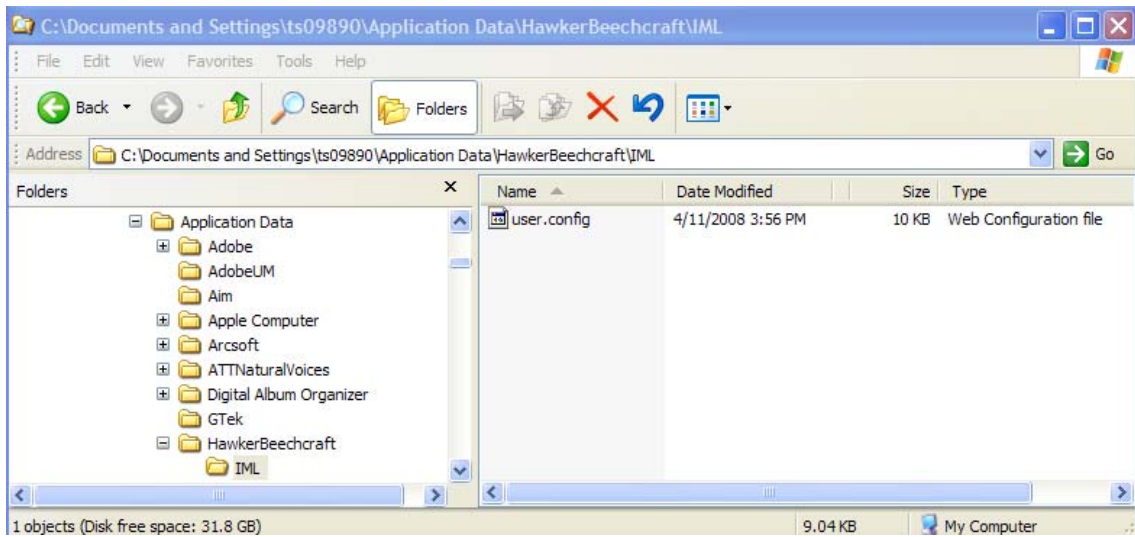
## User Files Location

### All Users



The user.config file in the **All Users** folder contains the configuration preferences as set by the Hawker Beechcraft customized installation.

### Individual User Profile



This user.config file contains the configuration preferences as set by each individual user.